

Anlage 4

zur Mag.-Vorl.-Nr.:

Vorhabenbezogener Bebauungsplan

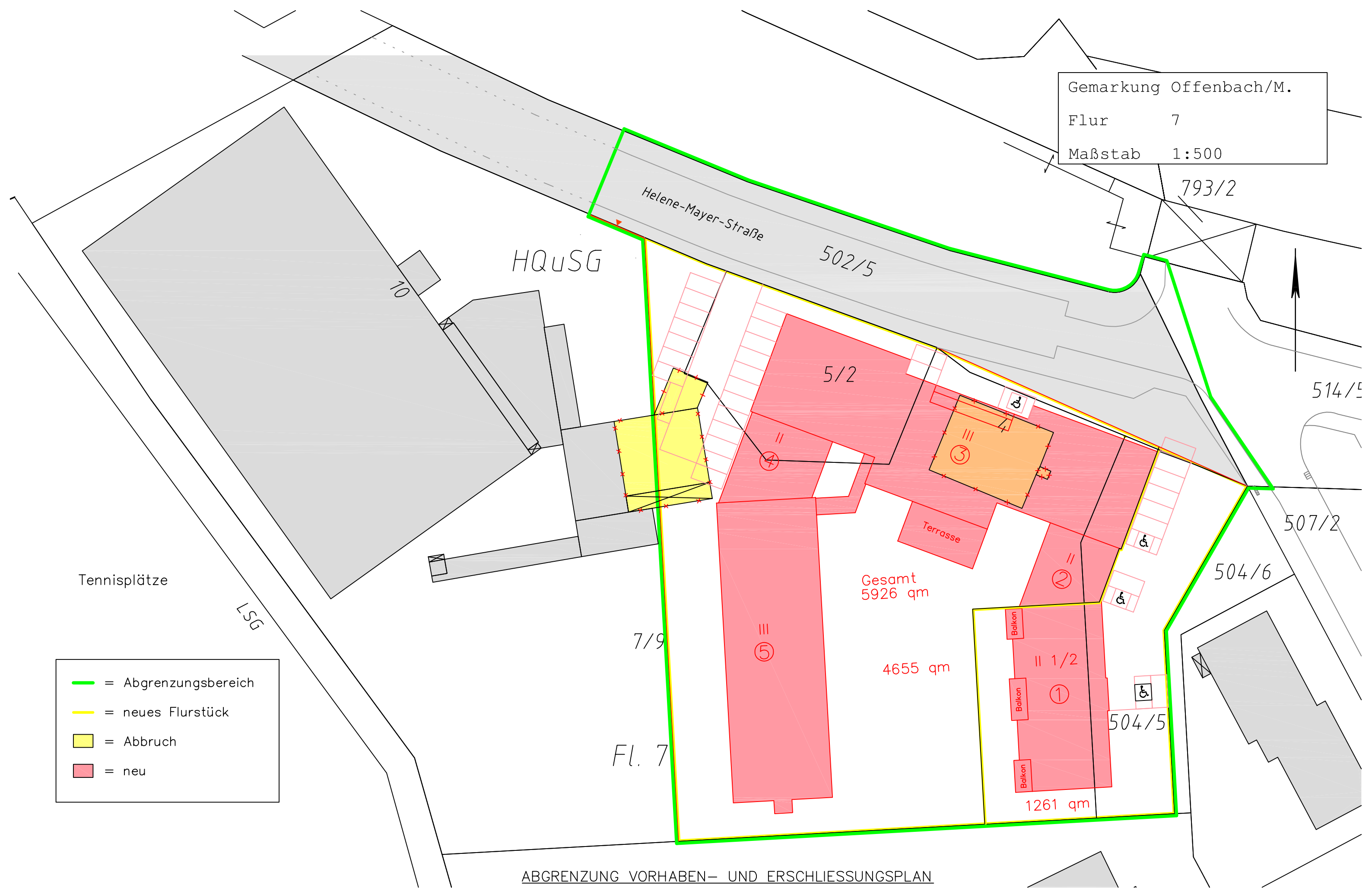
Nr. 630

"Helene-Mayer-Straße /
Pflegeheim und Altenwohnungen"

Vorhaben- und Erschließungsplan

Stand: 15.04.2009

Gemarkung Offenbach/M.
 Flur 7
 Maßstab 1:500



- = Abgrenzungsbereich
- = neues Flurstück
- = Abbruch
- = neu

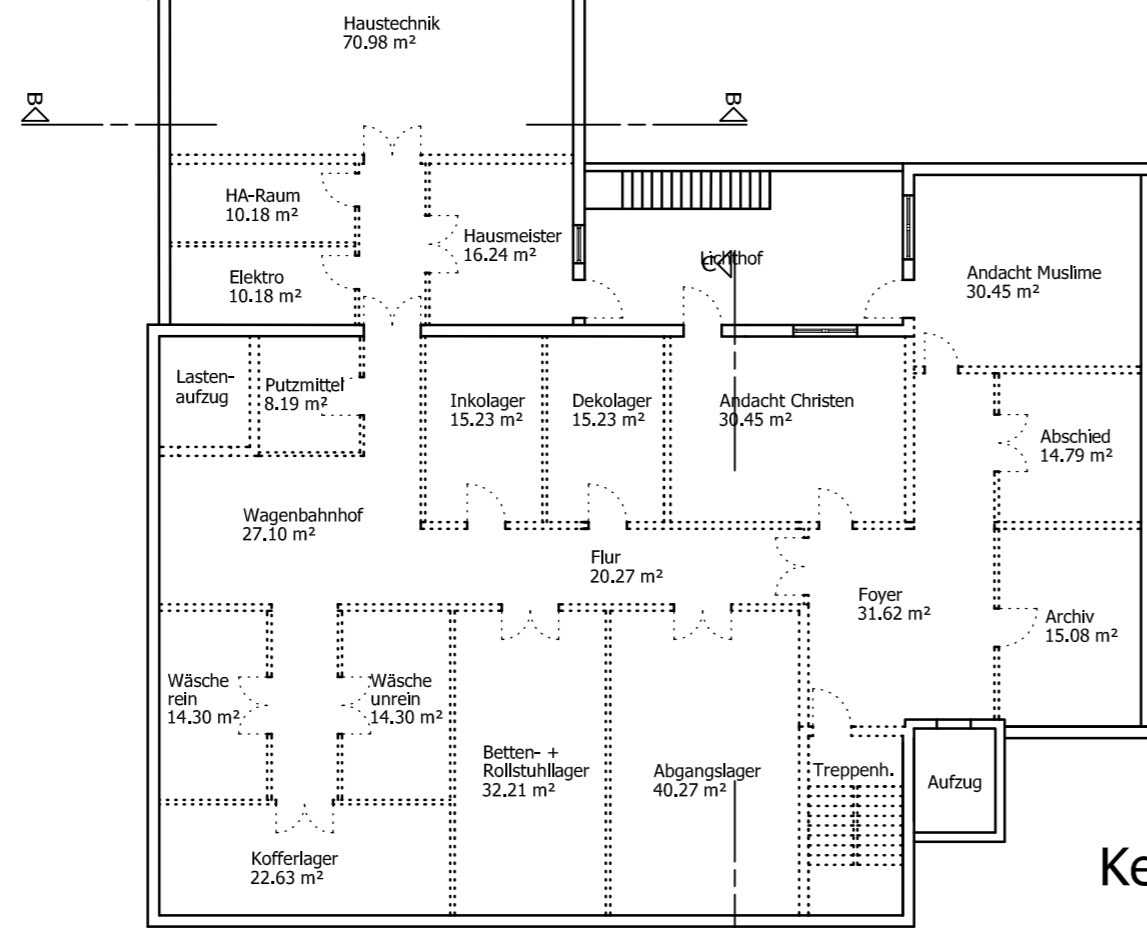
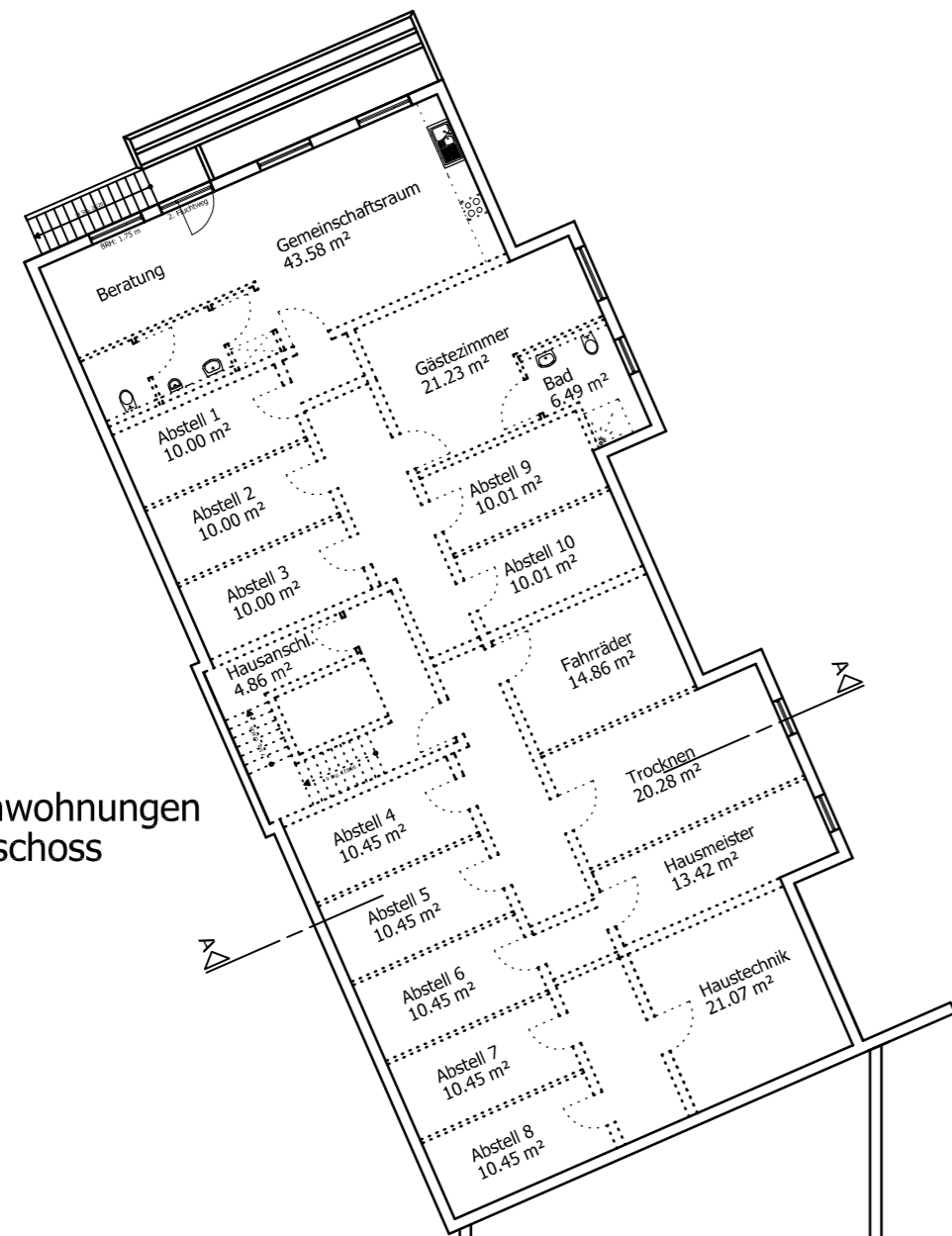
ABGRENZUNG VORHABEN- UND ERSCHLIESSUNGSPLAN

HQuSG

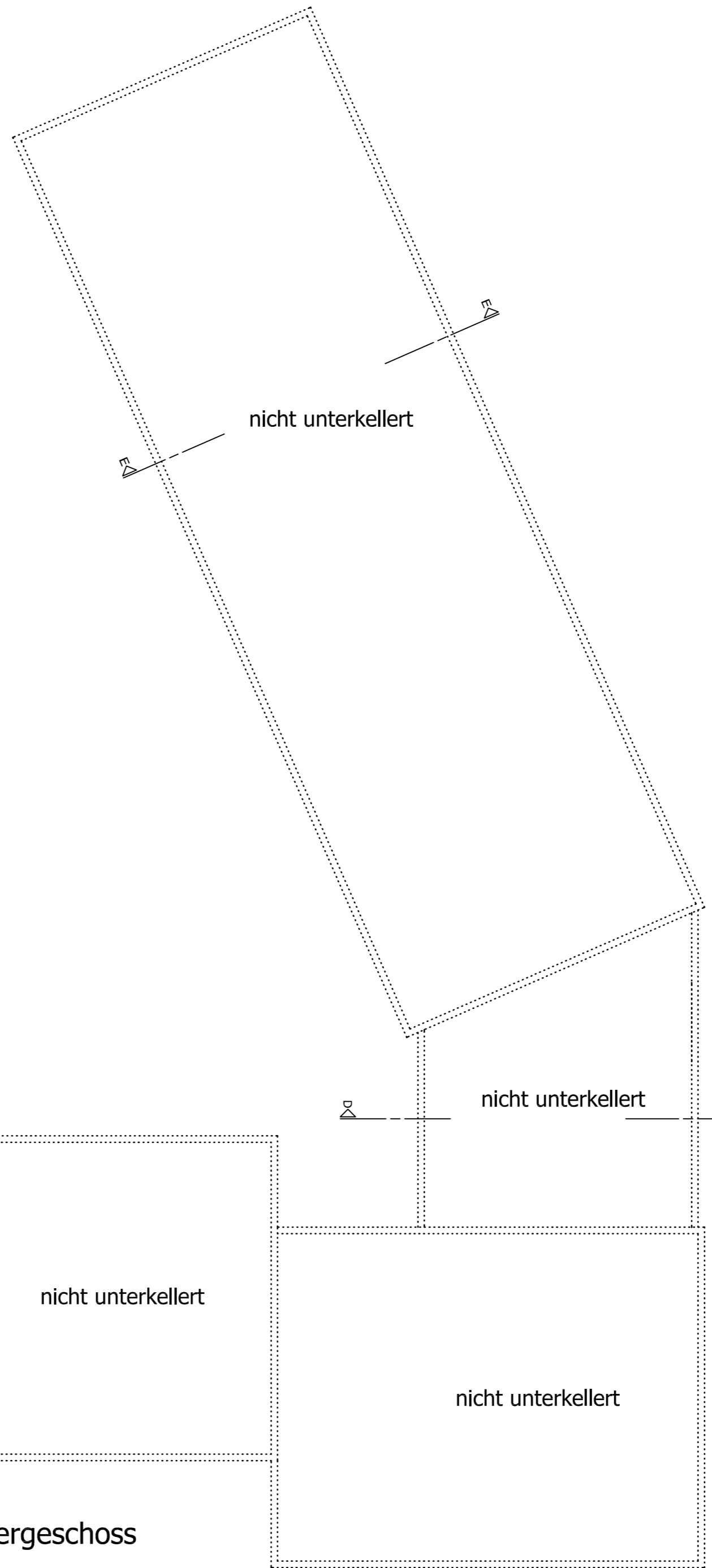
Helene-Mayer-Straße



Seniorenwohnungen
Kellergeschoss



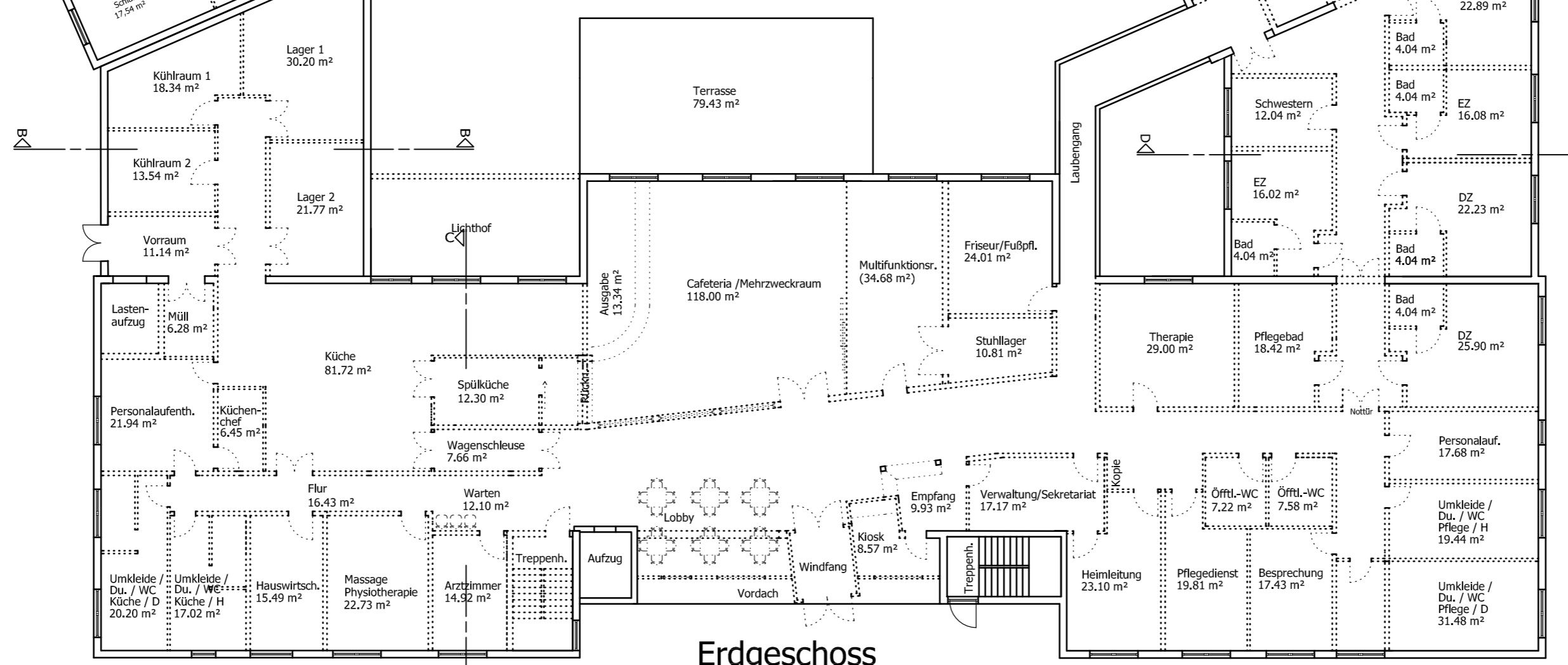
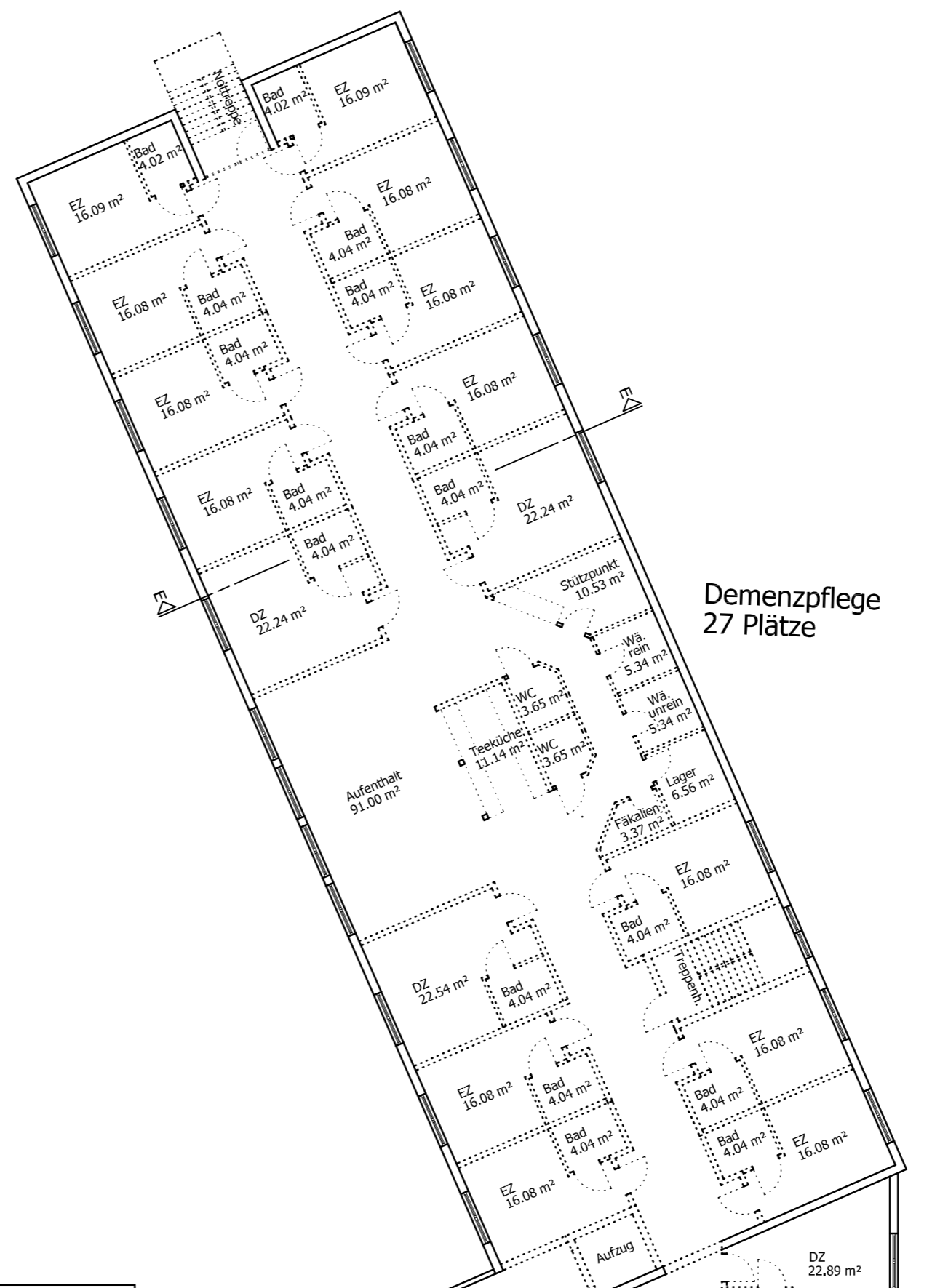
Kellergeschoss



Seniorenwohnungen
4 Wohnungen

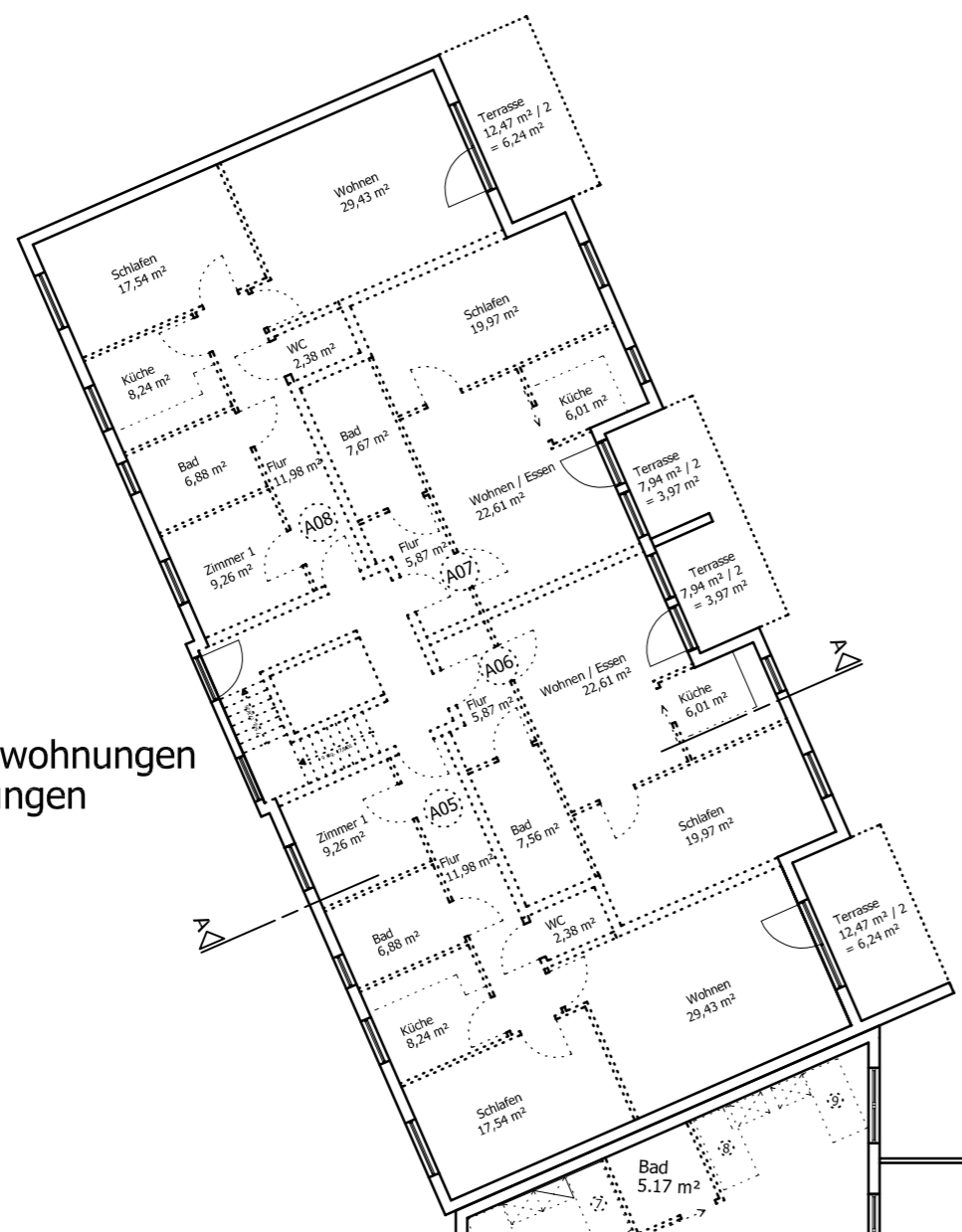


Demenzpflege
27 Plätze

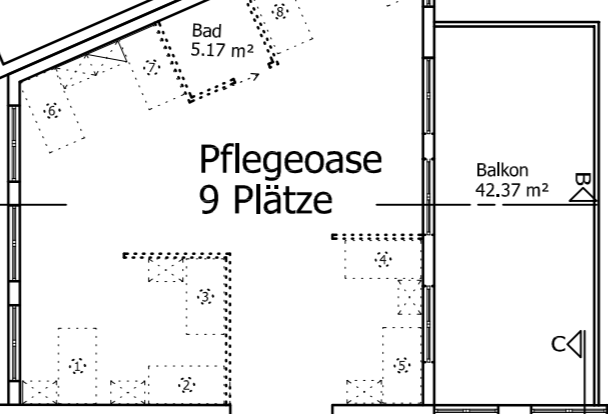


Erdgeschoss

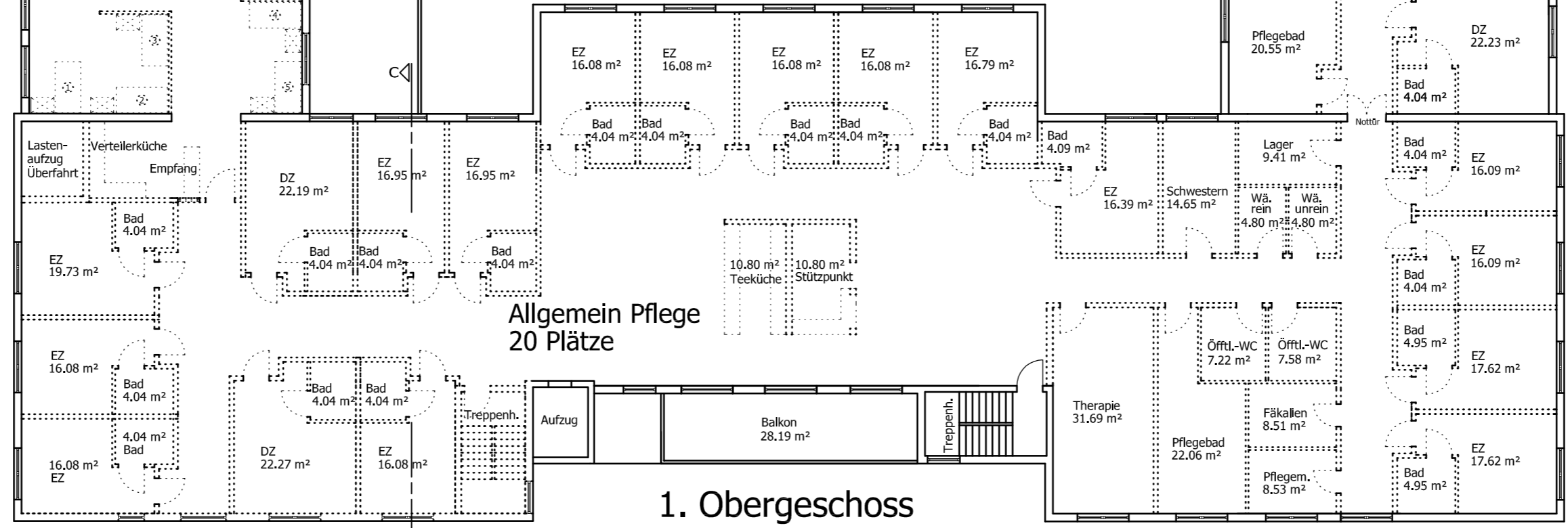
Seniorenwohnungen
4 Wohnungen



Pflegeoase
9 Plätze

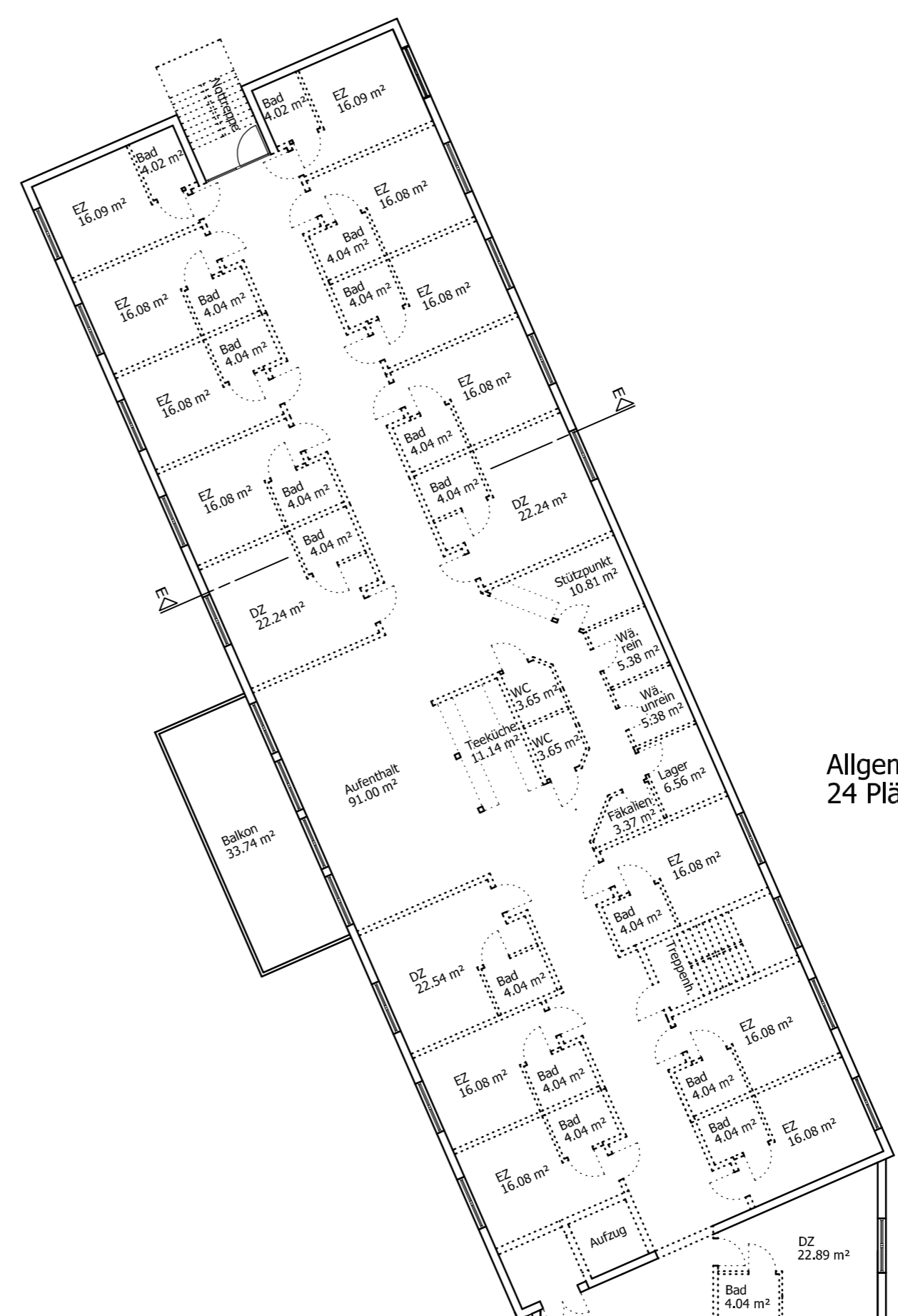


Allgemein Pflege
20 Plätze

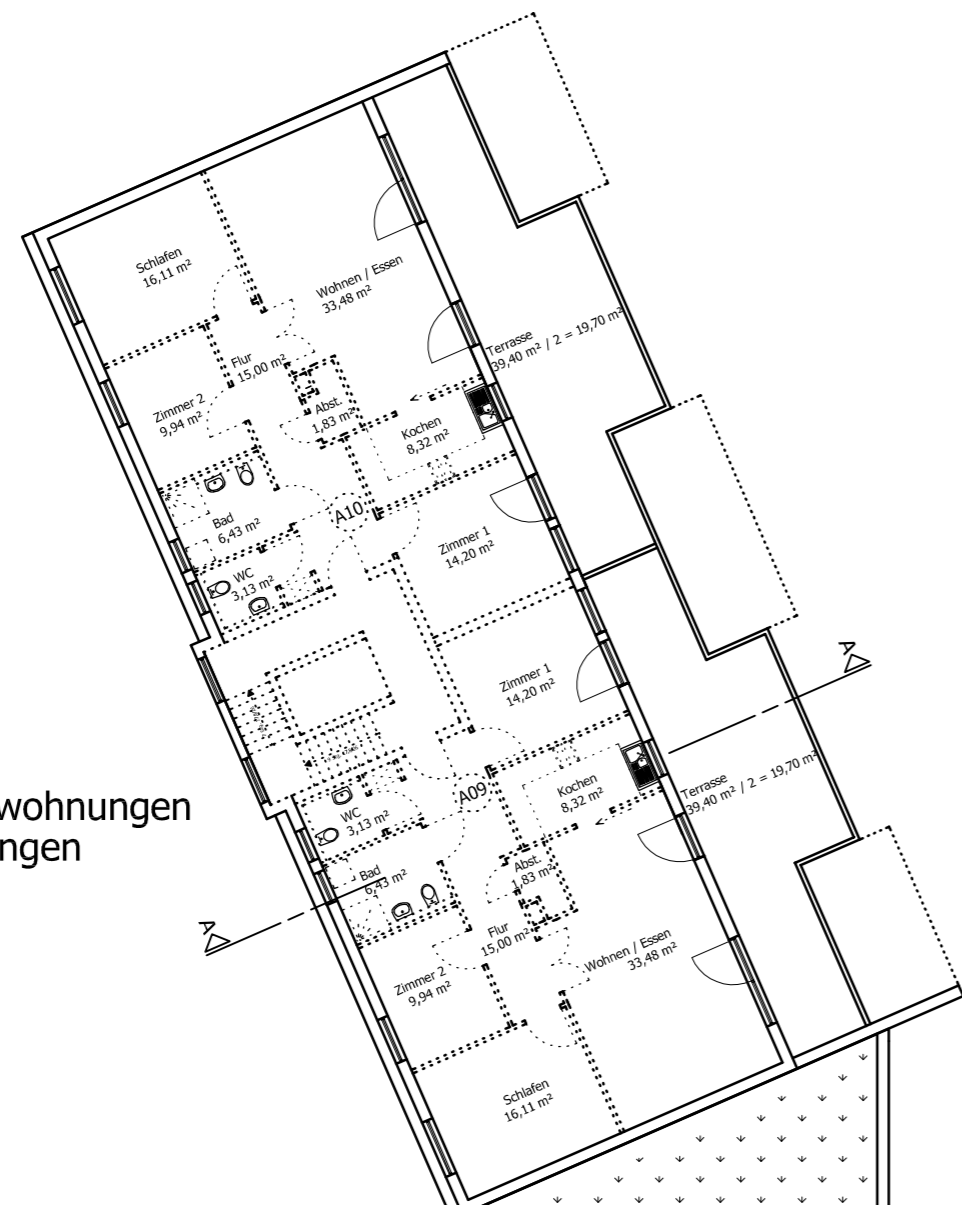


1. Obergeschoss

Allgemeinpflege
24 Plätze

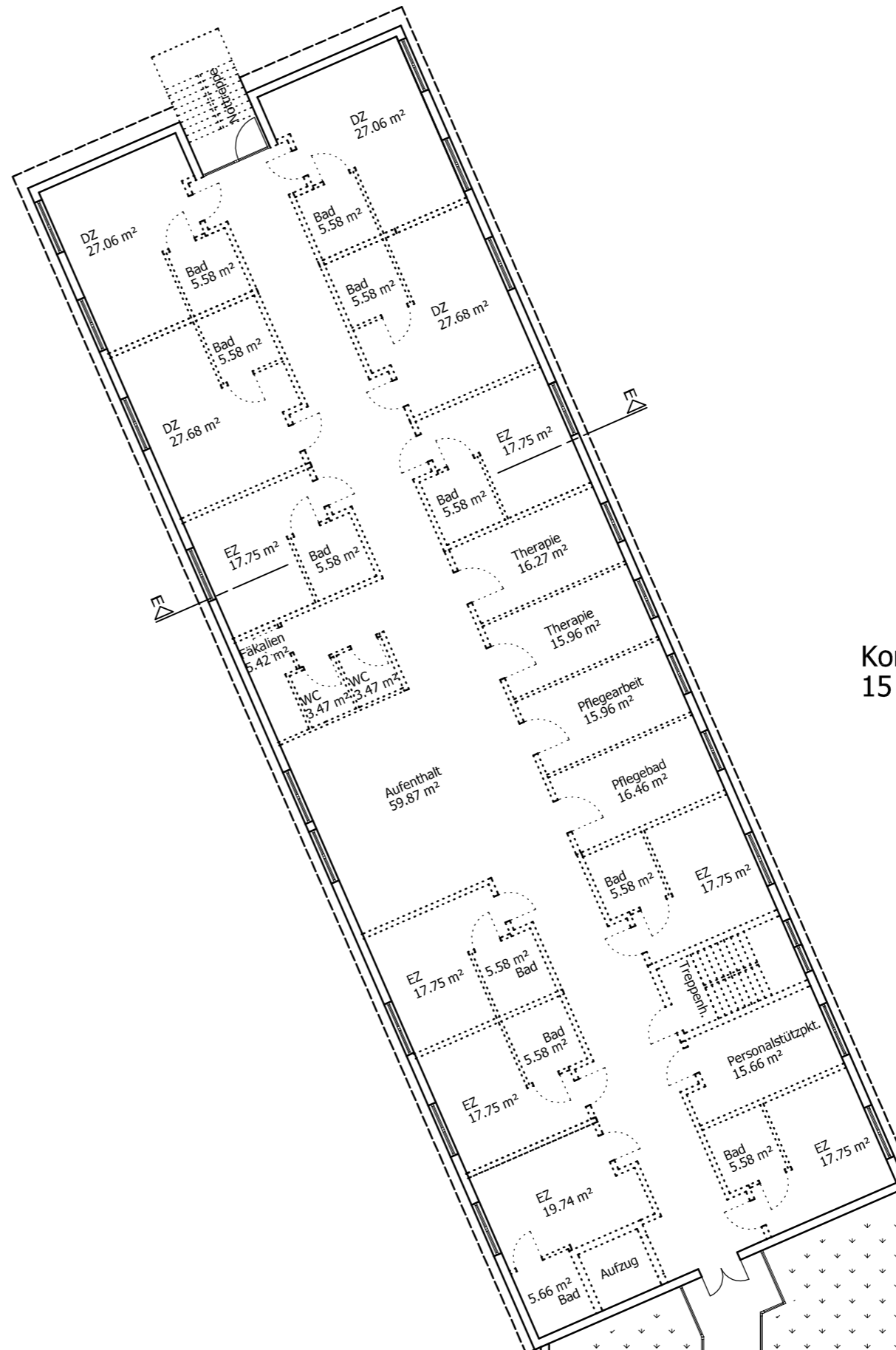


Seniorenwohnungen
2 Wohnungen

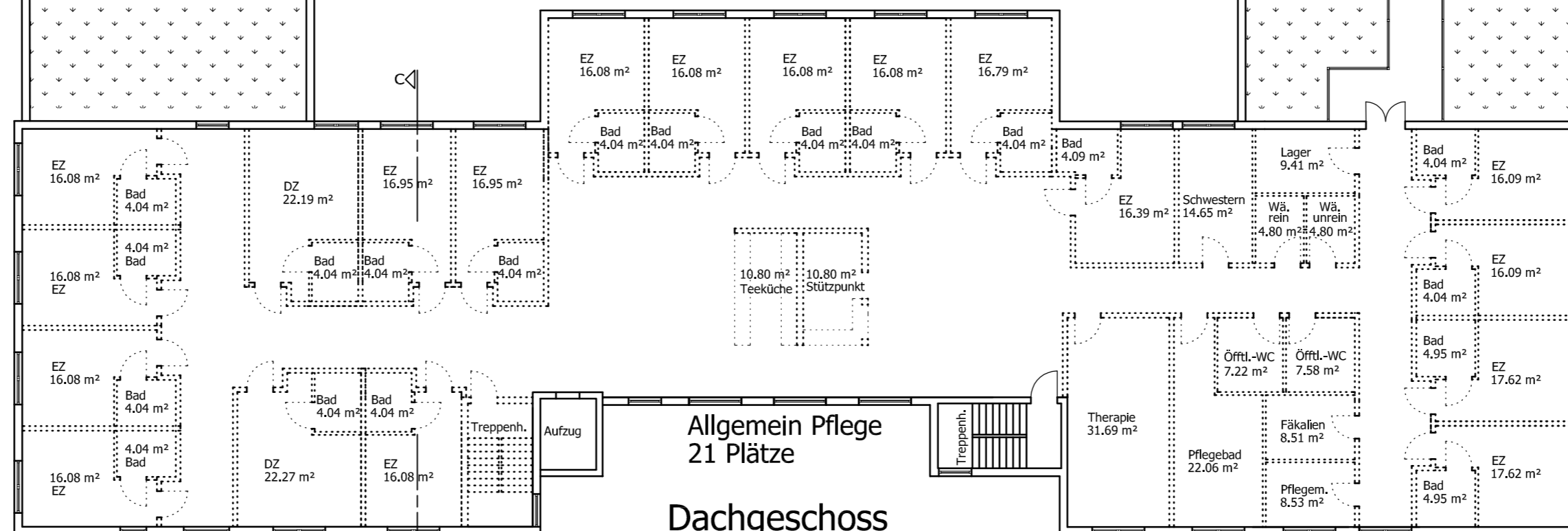


Dachterrasse
119,74 m²

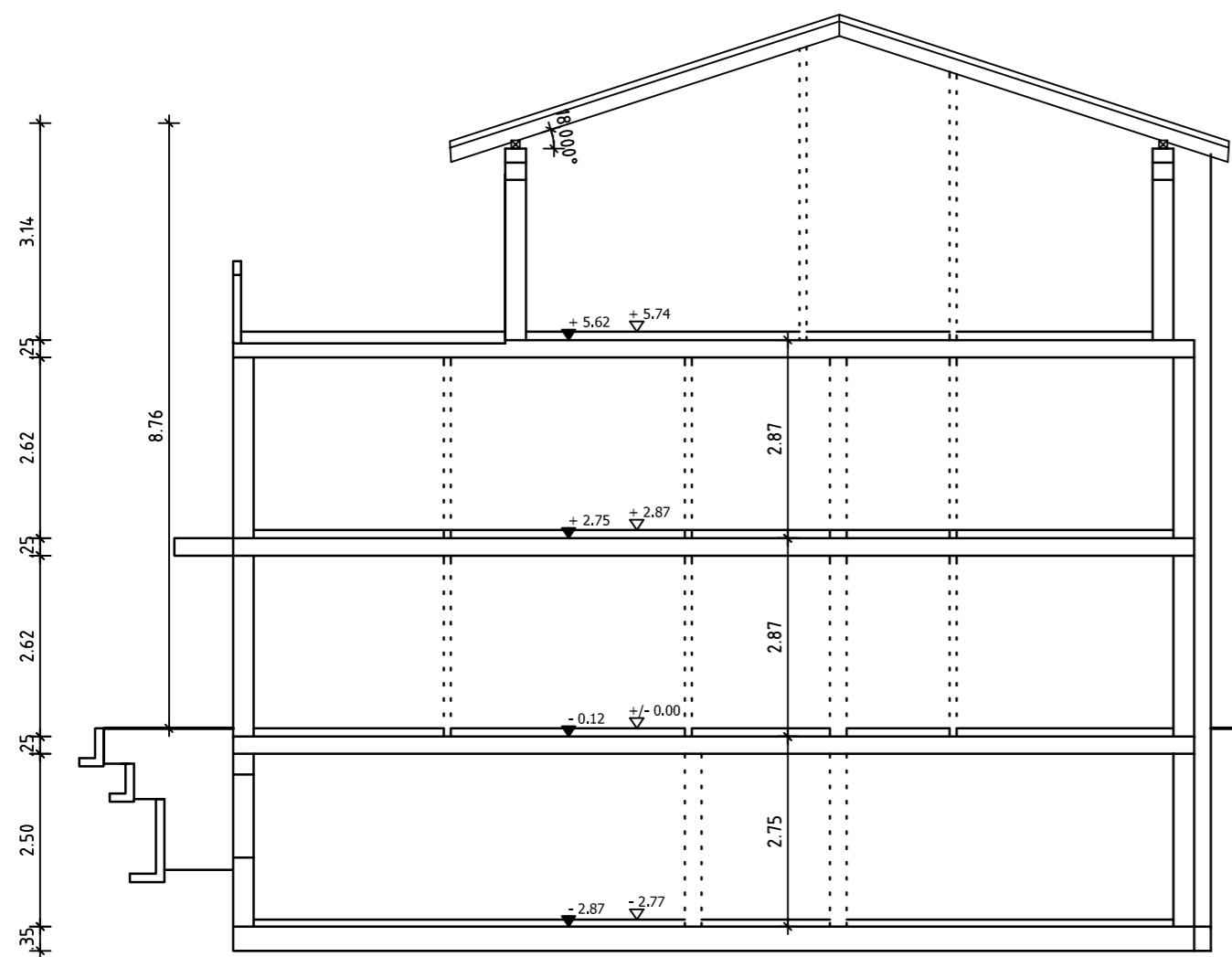
Kompetenzpflege
15 Plätze



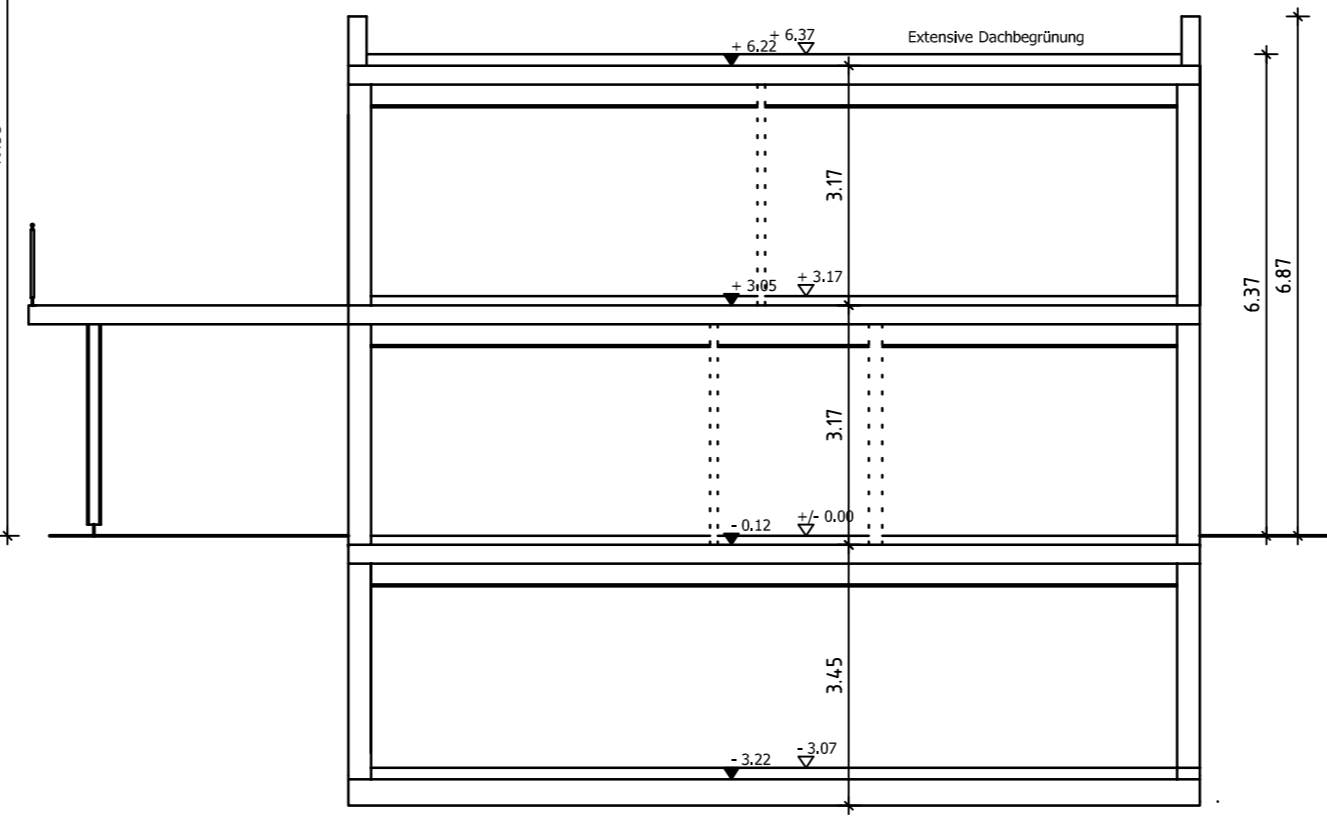
Dachterrasse
149,74 m²



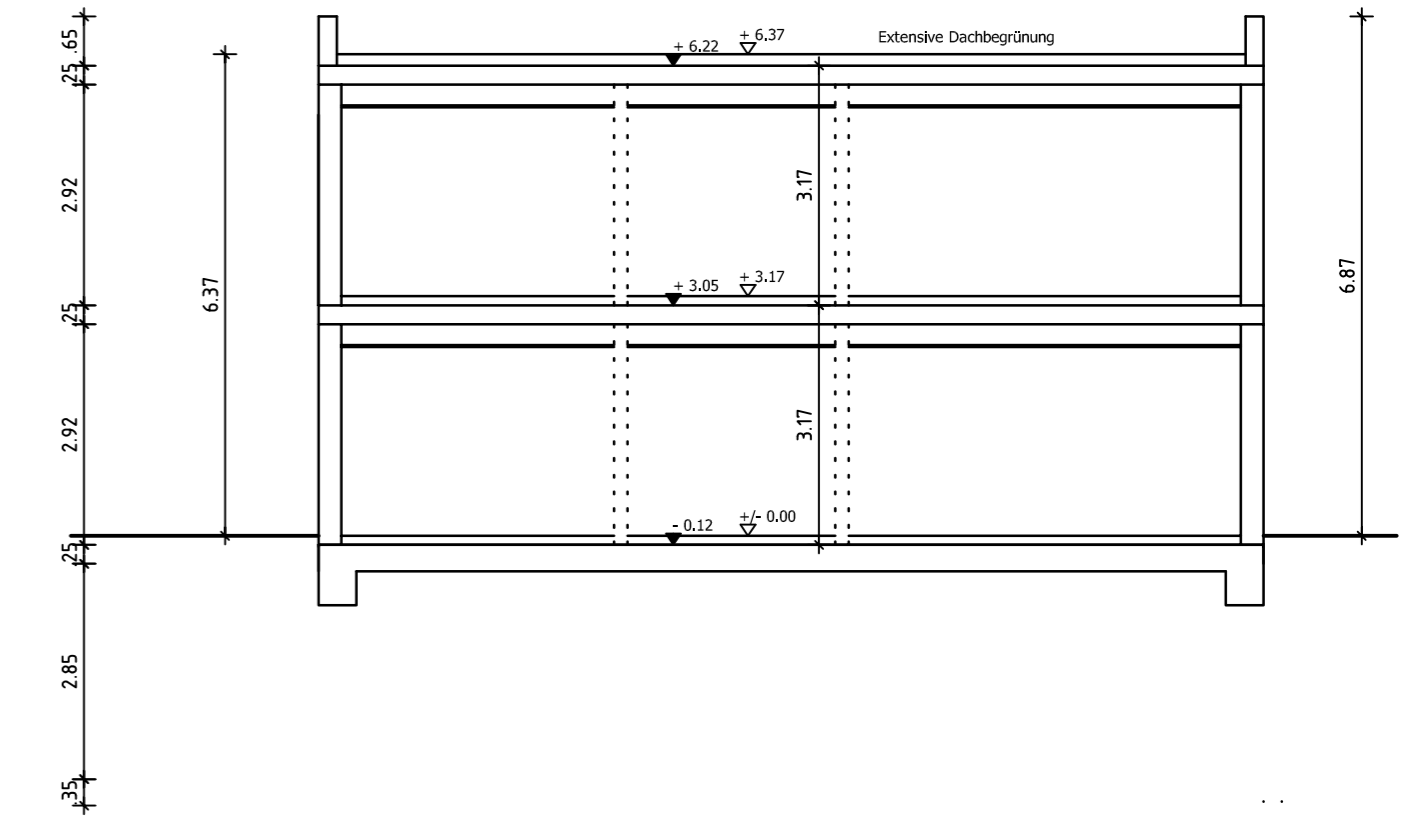
Allgemein Pflege
21 Plätze
Dachgeschoss



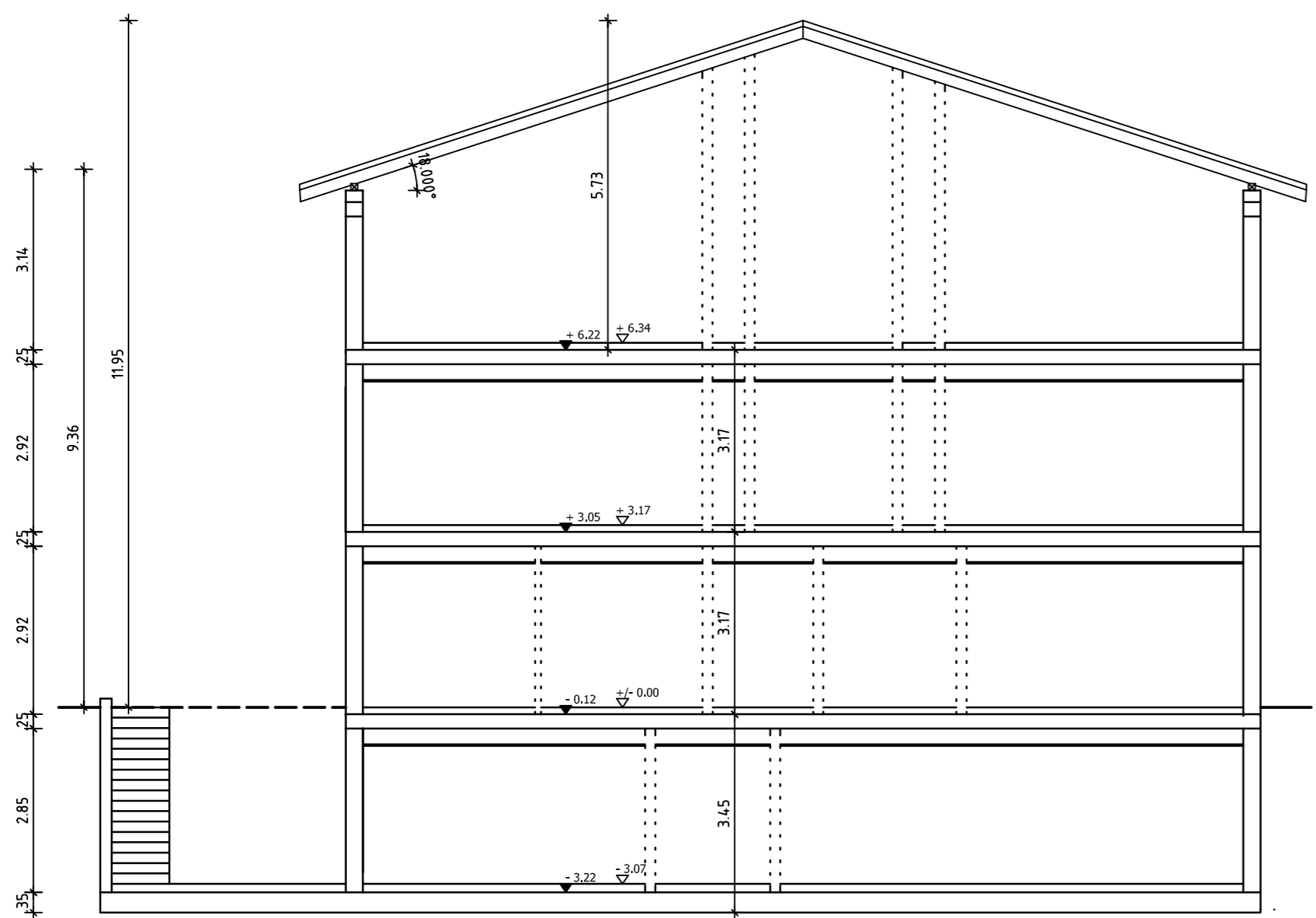
HAUS 1 - SCHNITT A-A



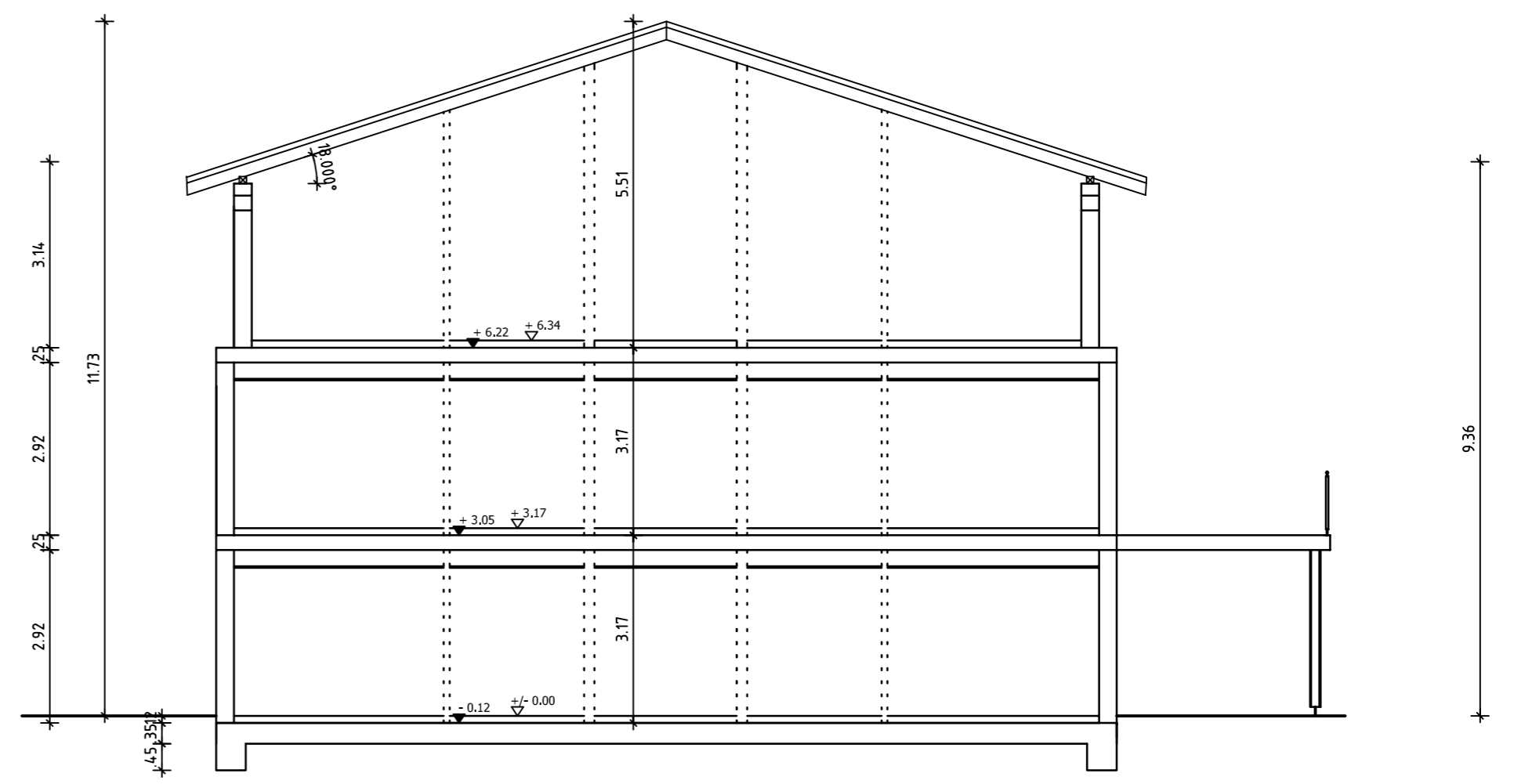
HAUS 2 - SCHNITT B-B



HAUS 4 - SCHNITT D-D



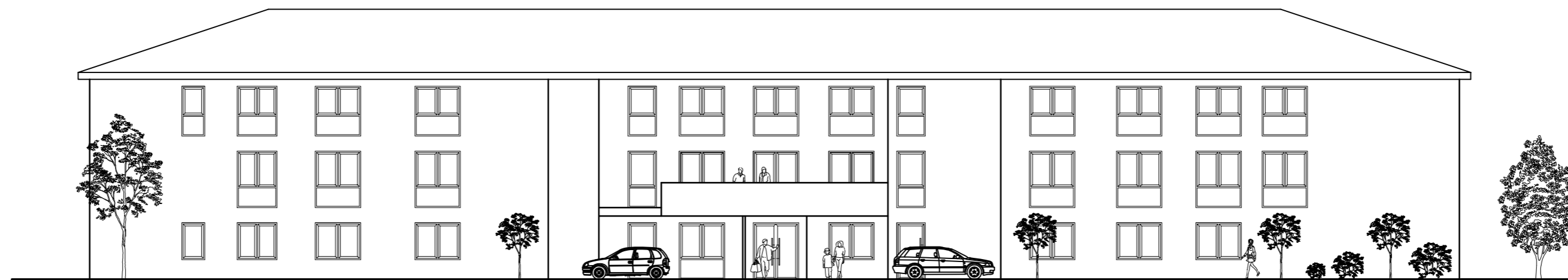
HAUS 3 - SCHNITT C-C



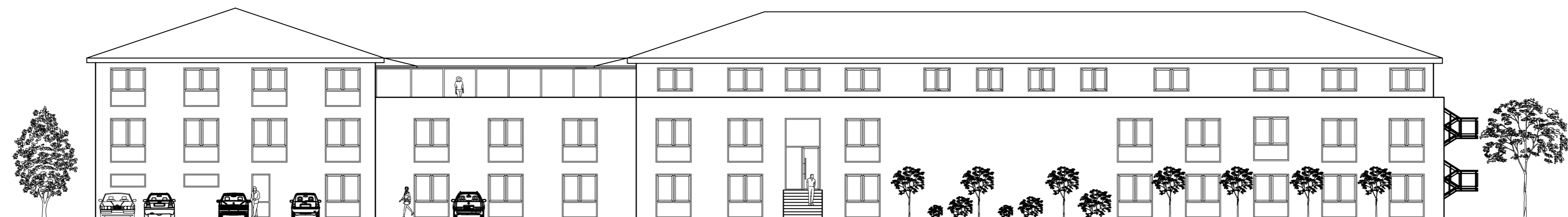
HAUS 5 - SCHNITT E-E



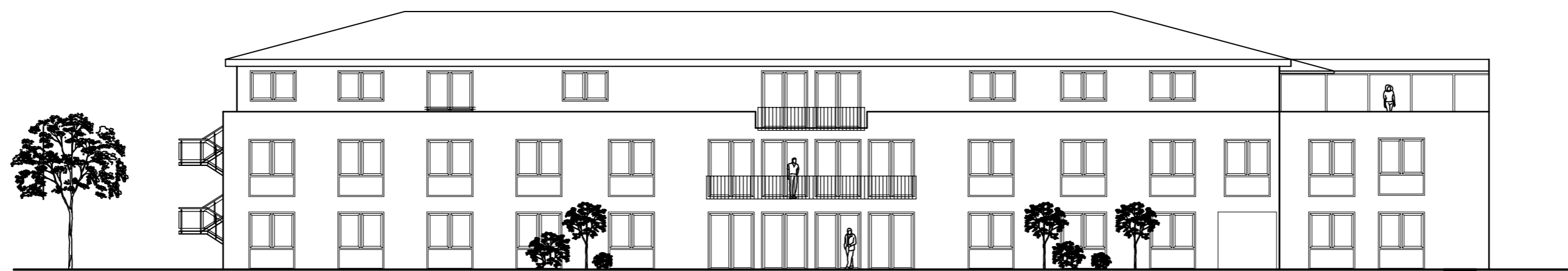
OST-ANSICHT



STRASSEN- BZW. NORD-ANSICHT



WEST-ANSICHT



GARTEN OST-ANSICHT



RÜCK- BZW. SÜD-ANSICHT



GARTEN WEST-ANSICHT