

Anlage 5

zur Mag.-Vorl.-Nr.:

Vorhabenbezogener Bebauungsplan




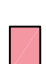
Nr. 630

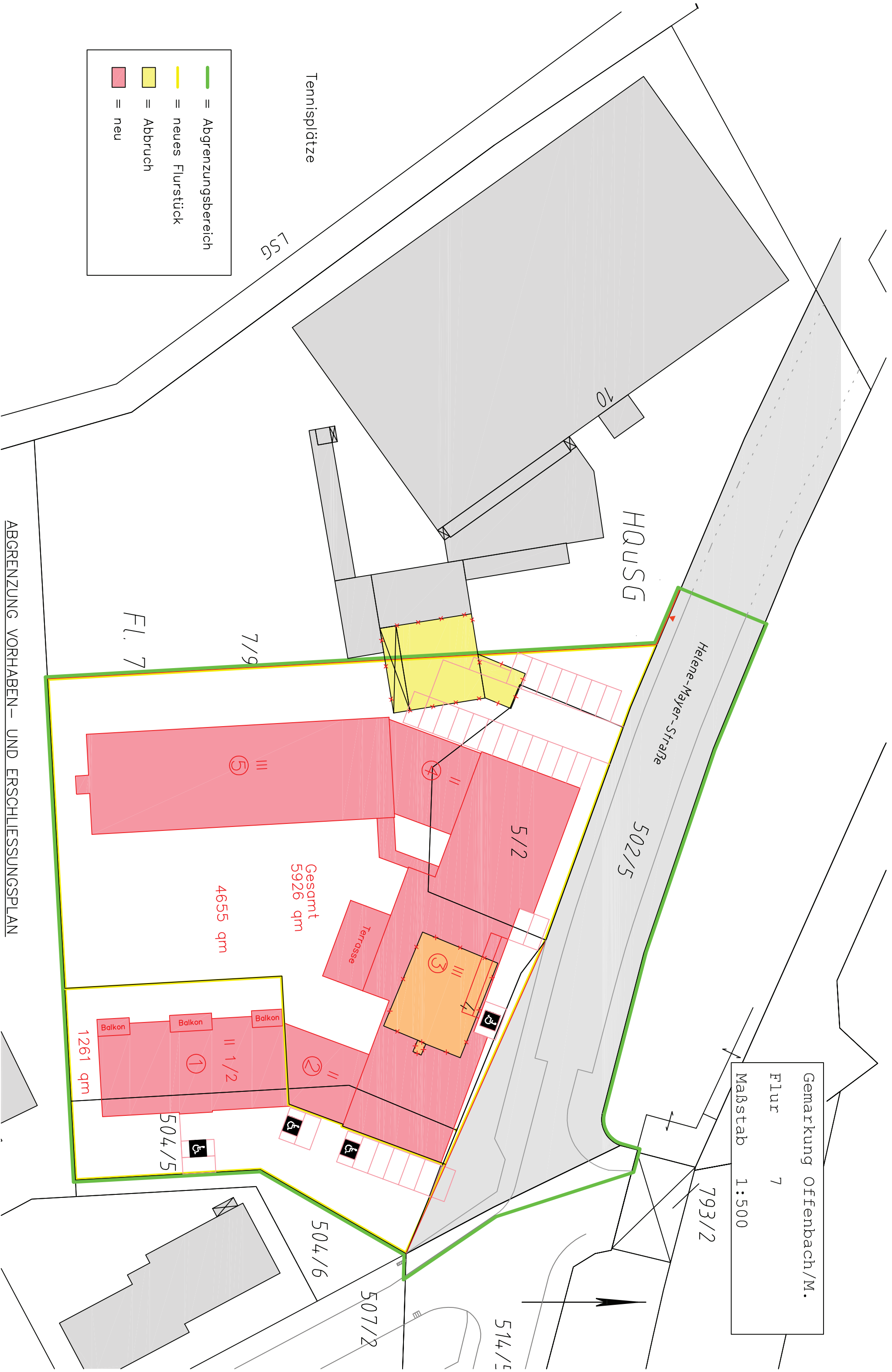
"Helene-Mayer-Straße /
Pflegeheim und Altenwohnungen"

Vorhaben- und Erschließungsplan

Stand: 10.08.2009

Gemarkung Offenbach/M.
 Flur 7
 Maßstab 1:500

	= Abgrenzungsbereich
	= neues Flurstück
	= Abbruch
	= neu



ABGRENZUNG VORHABEN – UND ERSCHLIESSUNGSPLAN

HAUSG

Helene-Mayer-Straße



Grdstk.
4626 qm

Umlauf-
garten

Terrasse

Laubengang

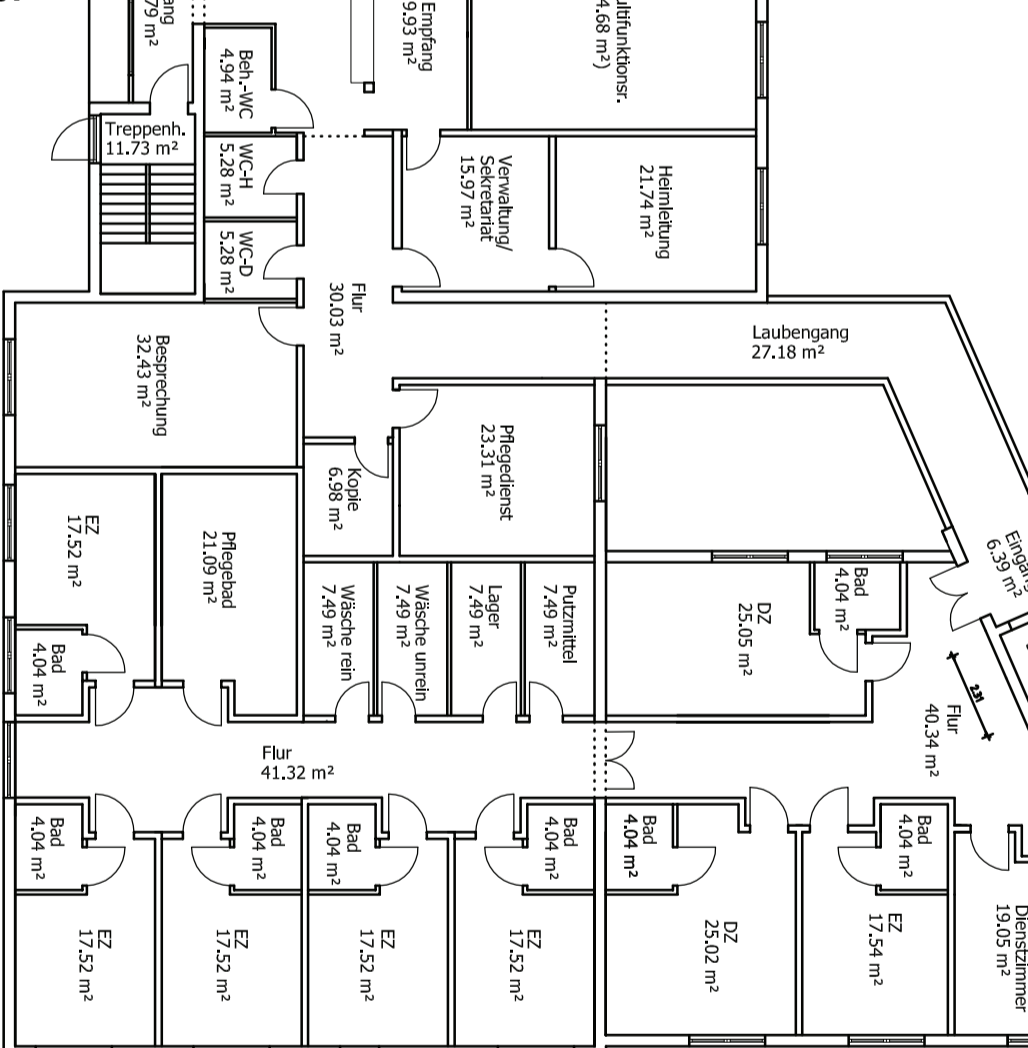
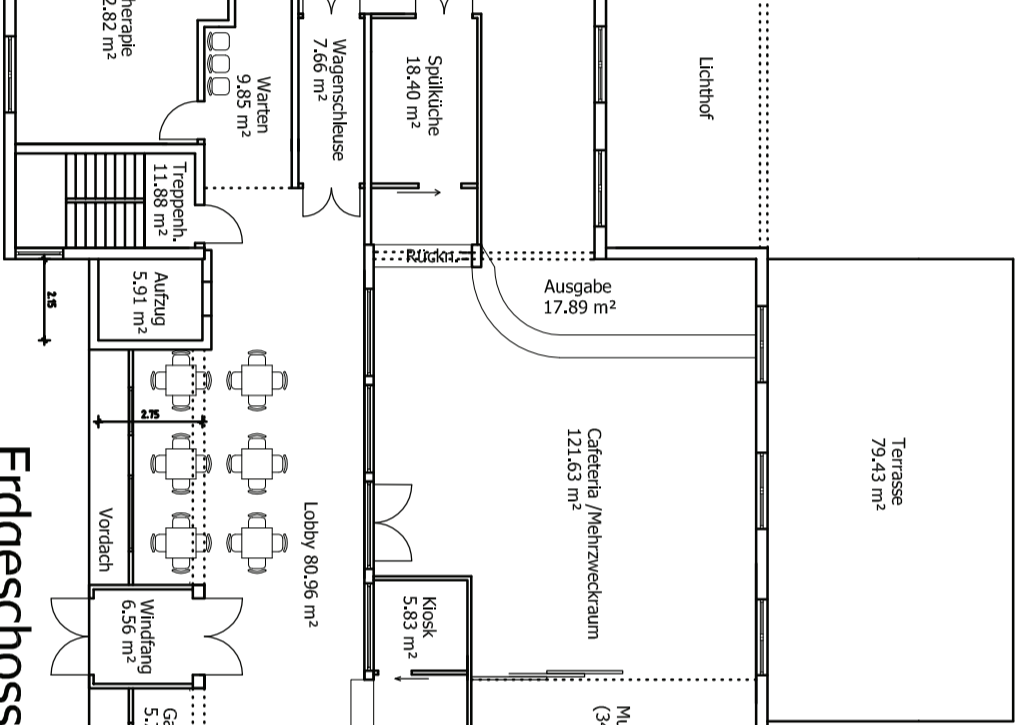
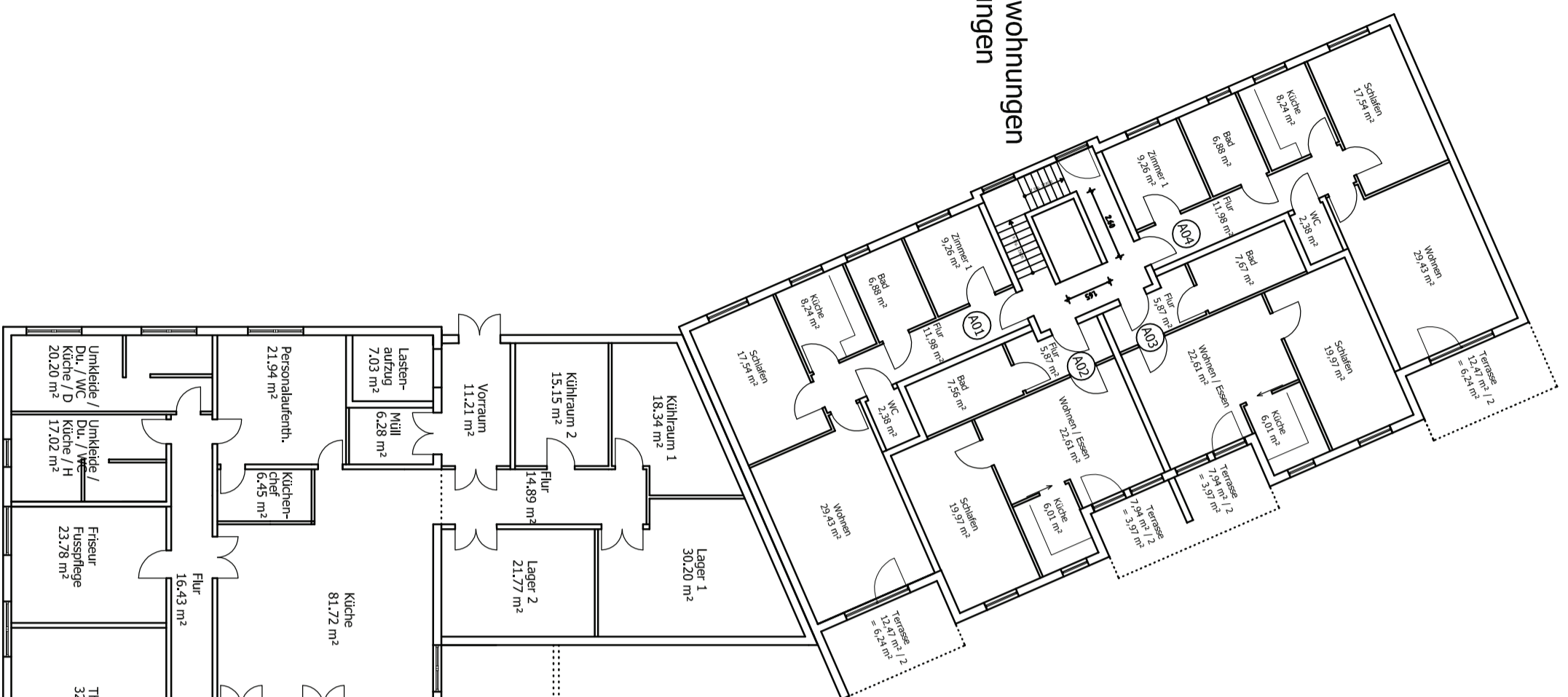
Terrasse

Lichthof

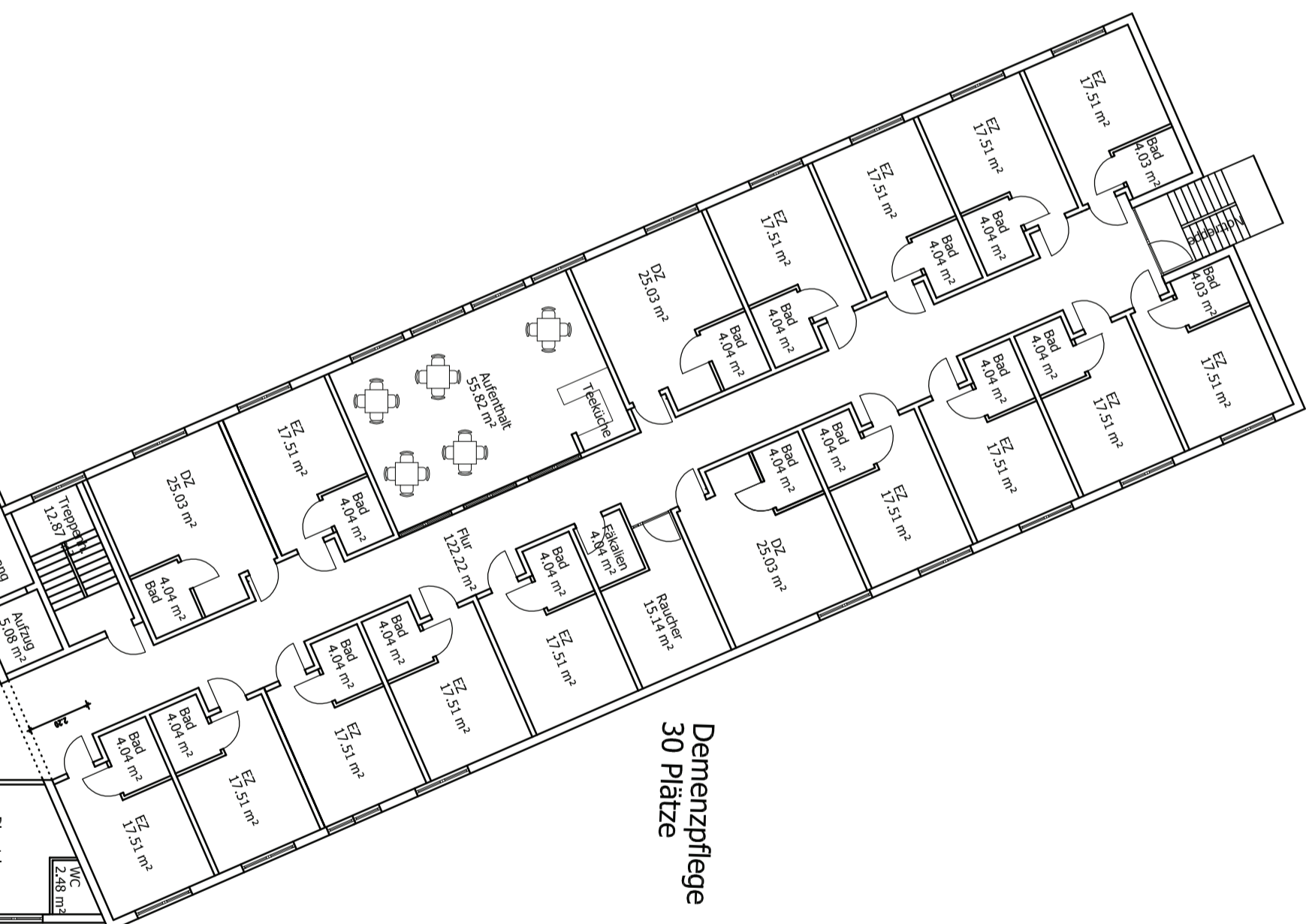
Grdstk.
1258 qm

NEUBAU SENIOREN- / PFLEGEZENTRUM - Helene-Mayer-Str. - Offenbach/M. Immoprojekt Entwicklungs GmbH - Eibenstr. 1d - 63303 Dreieich 30.03.2009 Freiflächenplan M.: 1:250

Seniorenwohnungen
4 Wohnungen

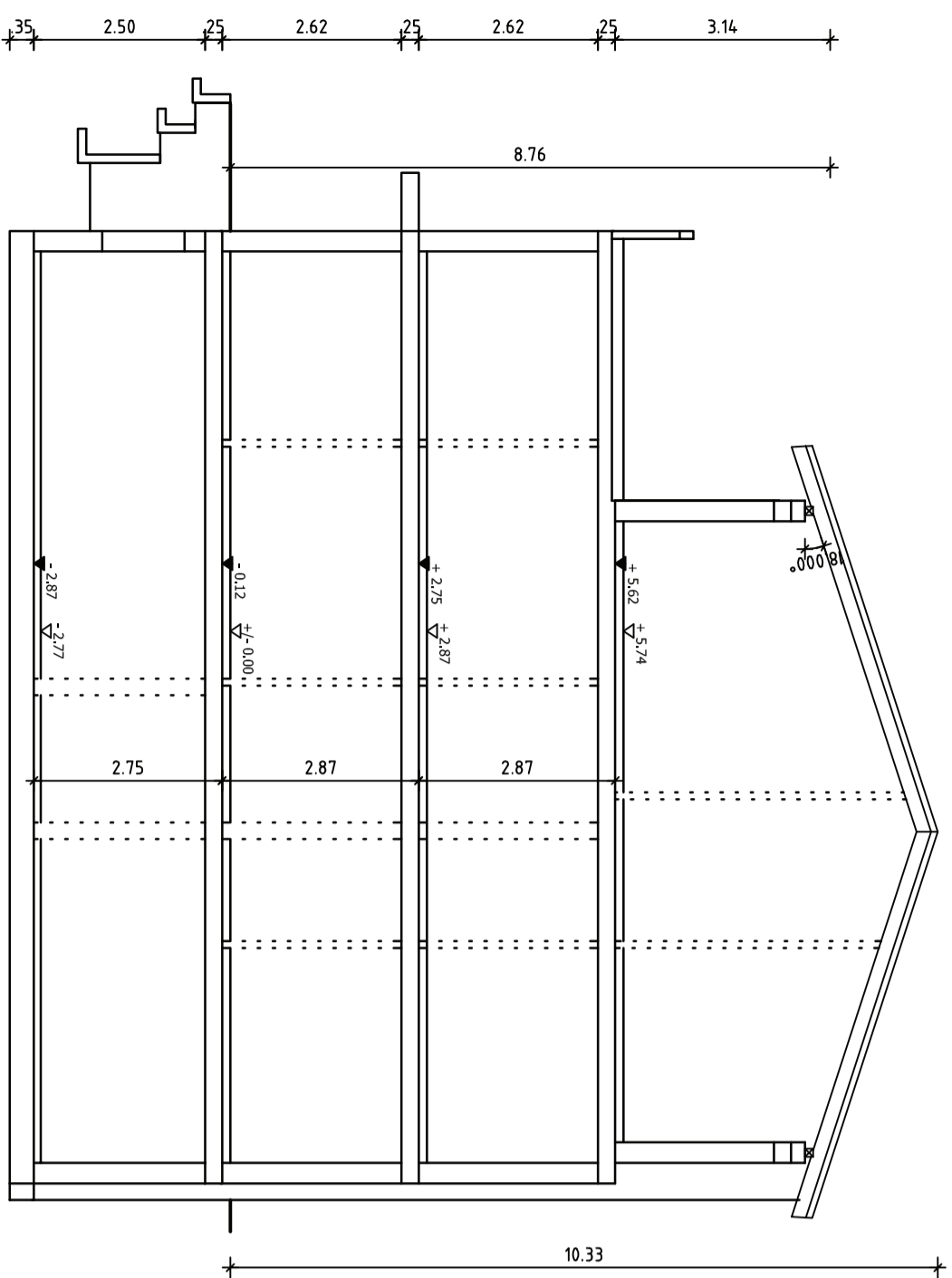


Demenzpflege
30 Plätze

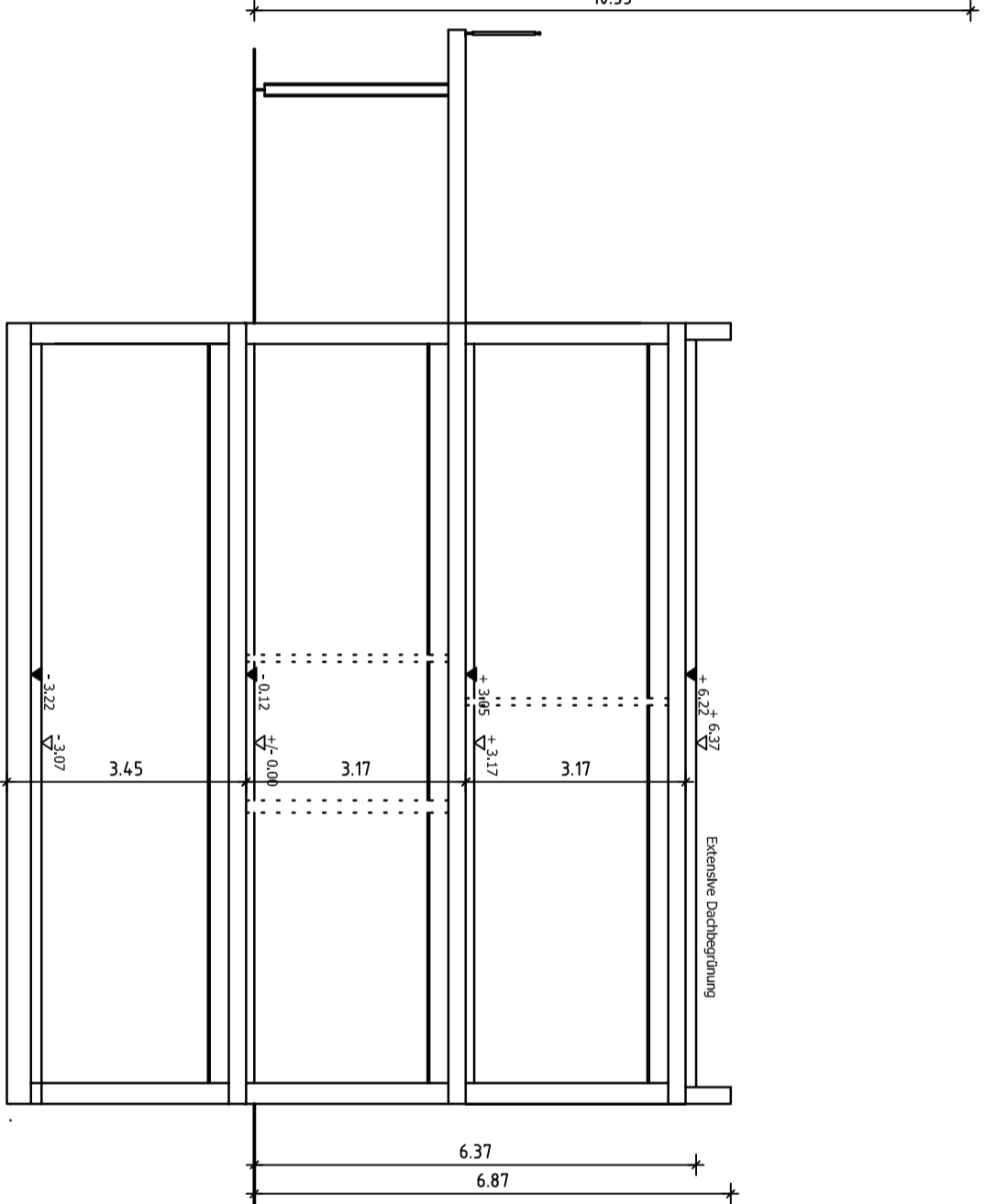


Erdgeschoss

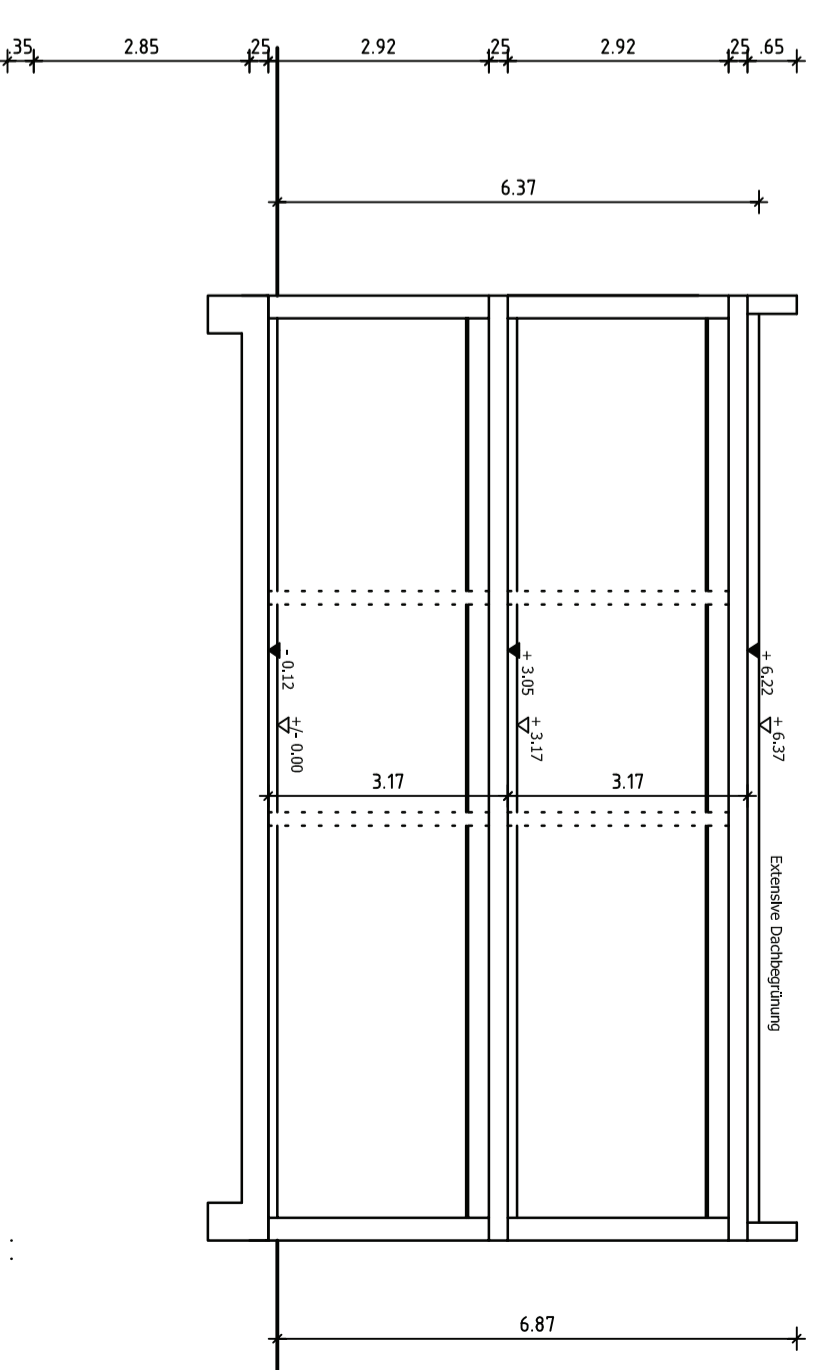




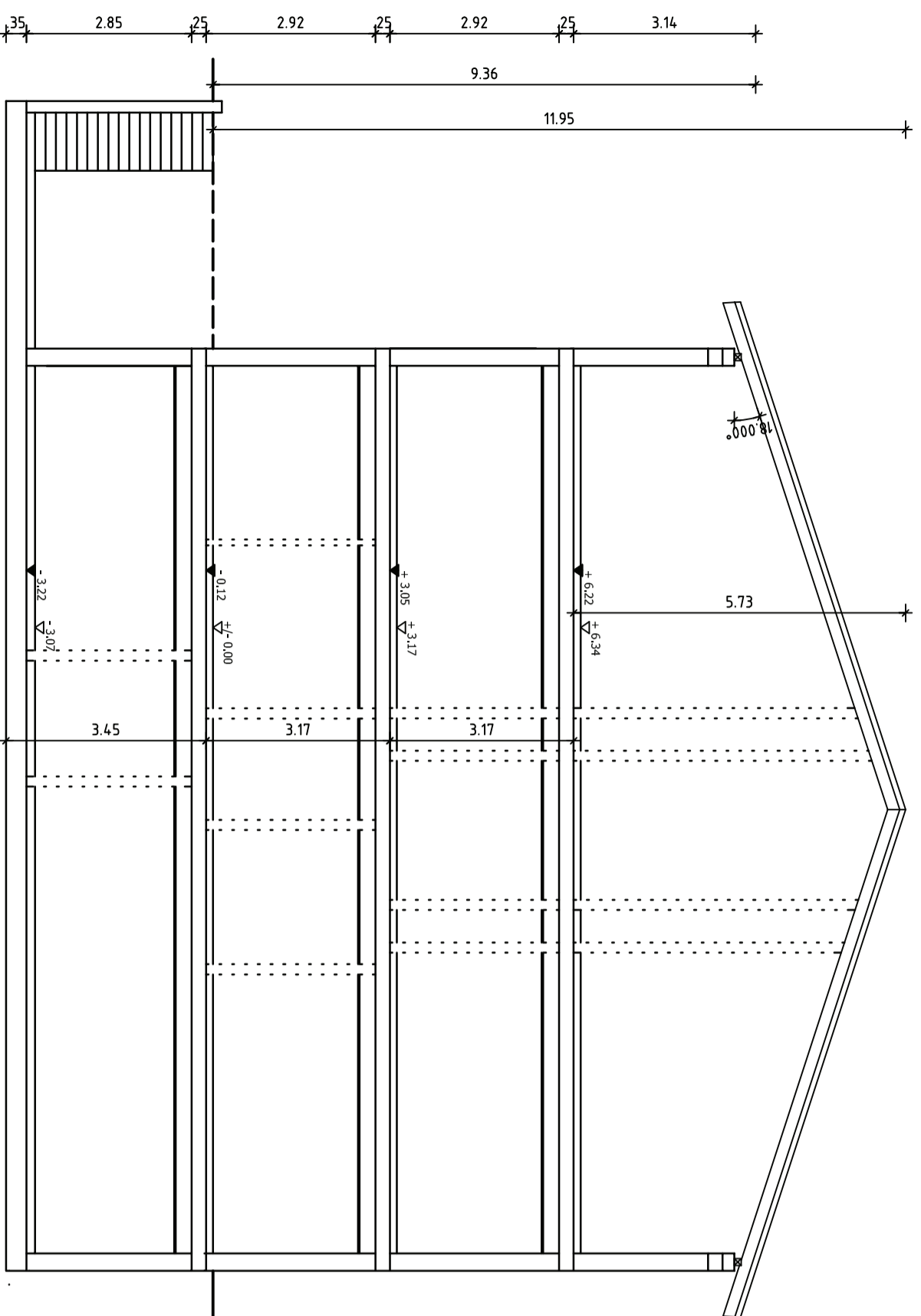
HAUS 1 - SCHNITT A-A



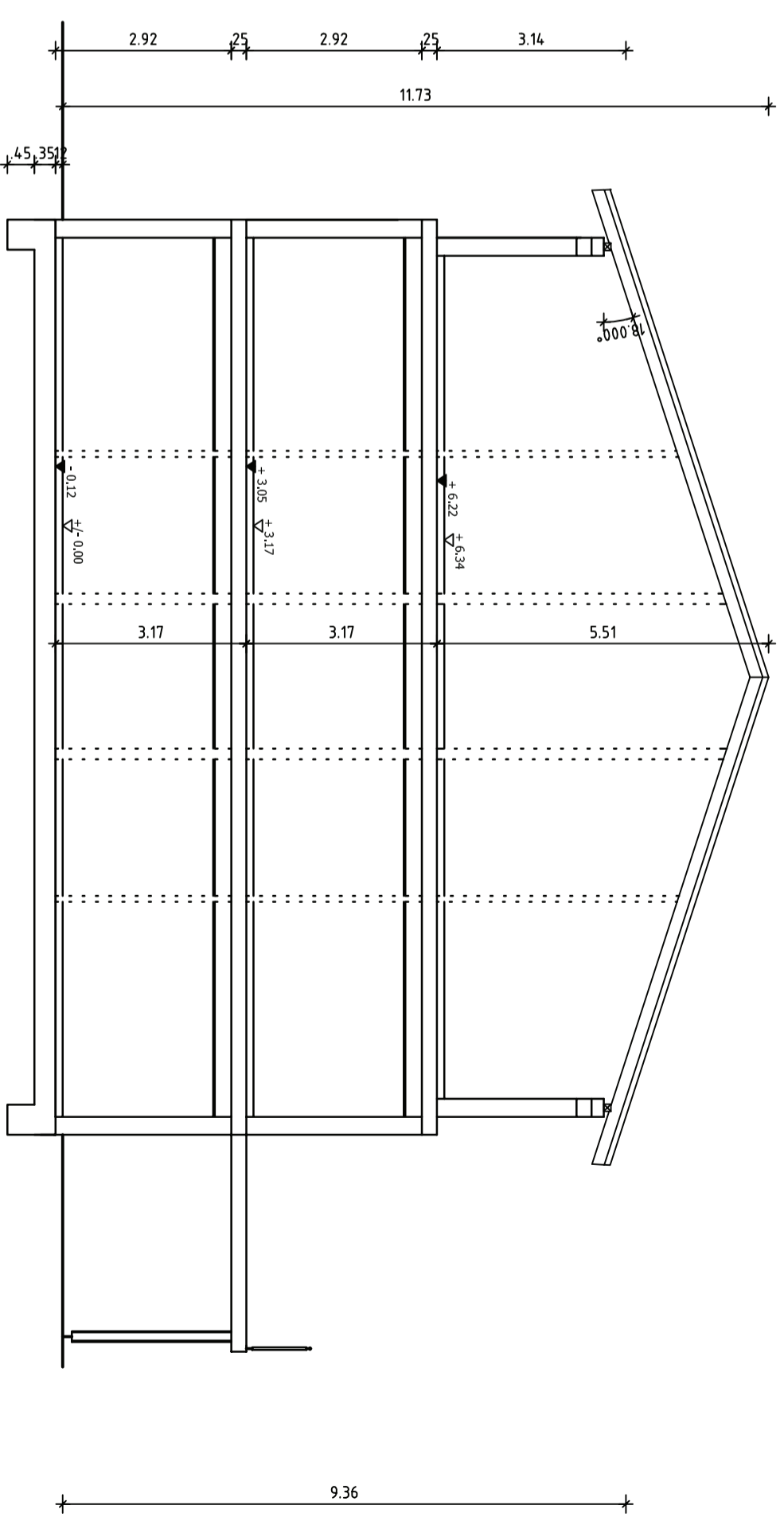
HAUS 2 - SCHNITT B-B



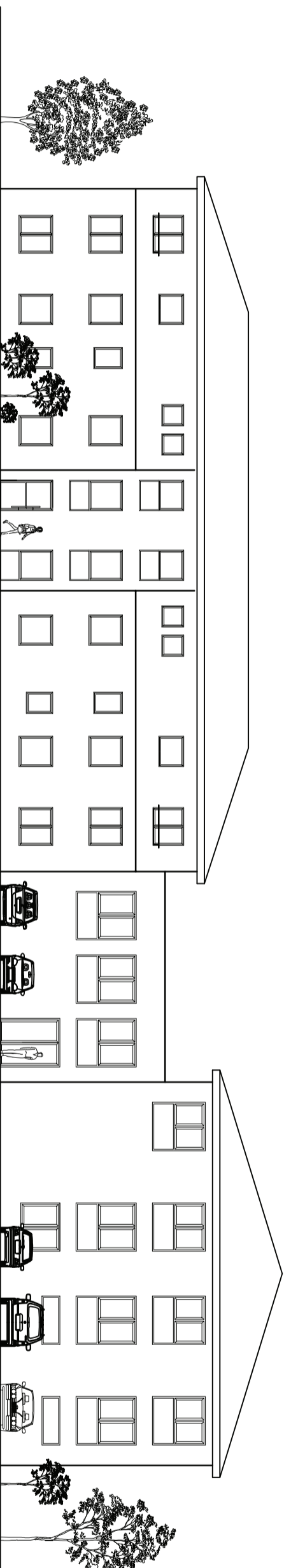
HAUS 4 - SCHNITT D-D



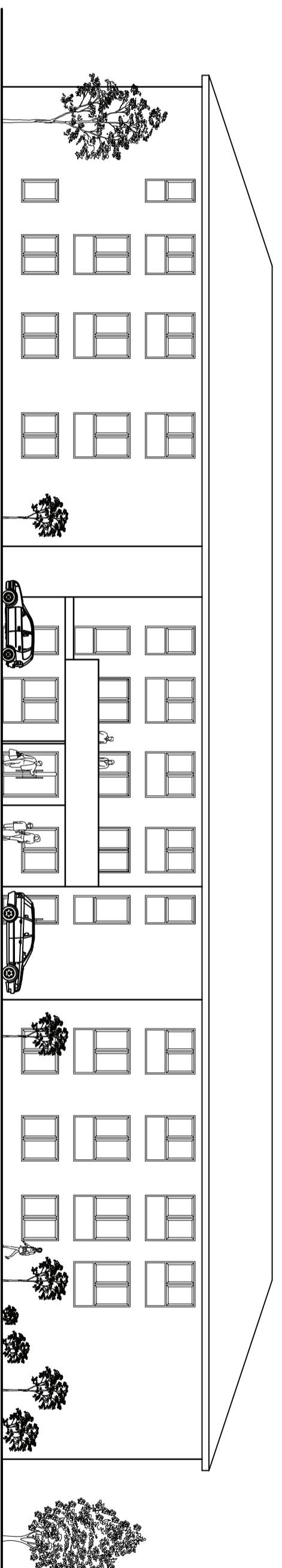
HAUS 3 - SCHNITT C-C



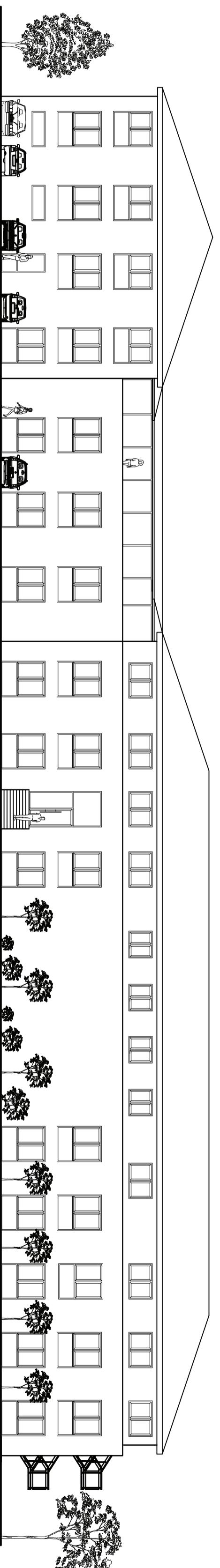
HAUS 5 - SCHNITT E-E



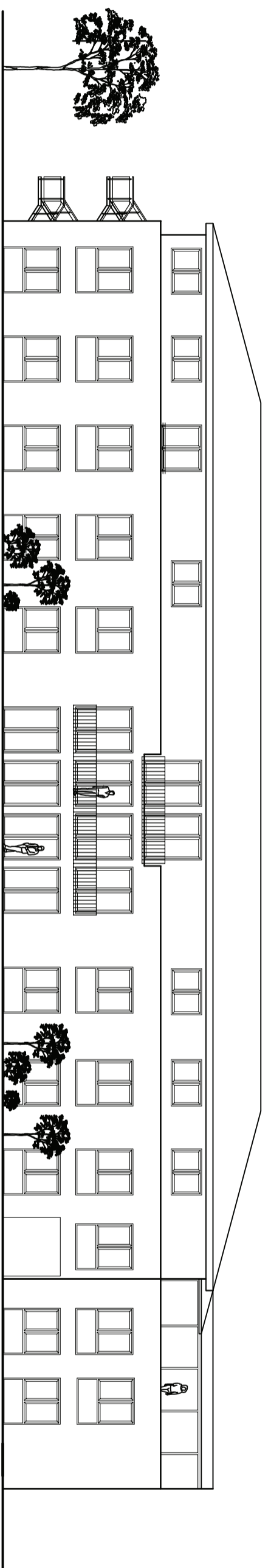
OST-ANSICHT



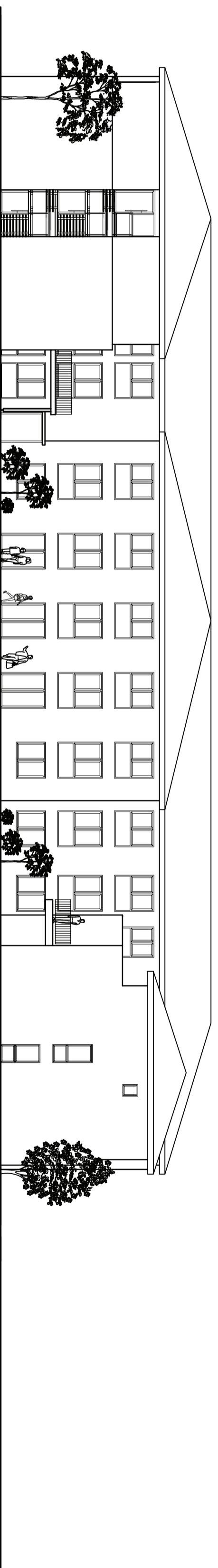
STRASSEN - BZW. NORD-ANSICHT



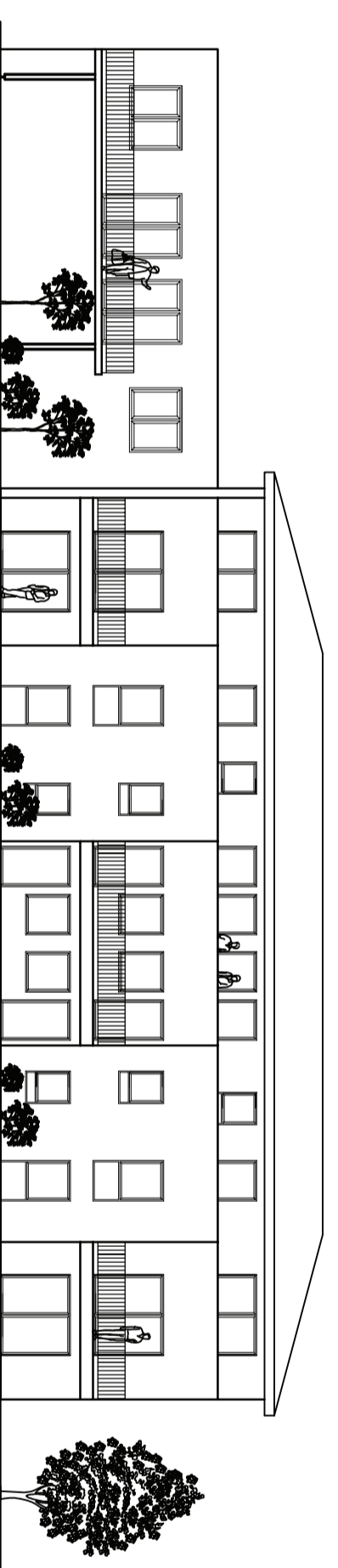
WEST-ANSICHT



GARTEN OST-ANSICHT



RÜCK - BZW. SÜD-ANSICHT



GARTEN WEST-ANSICHT