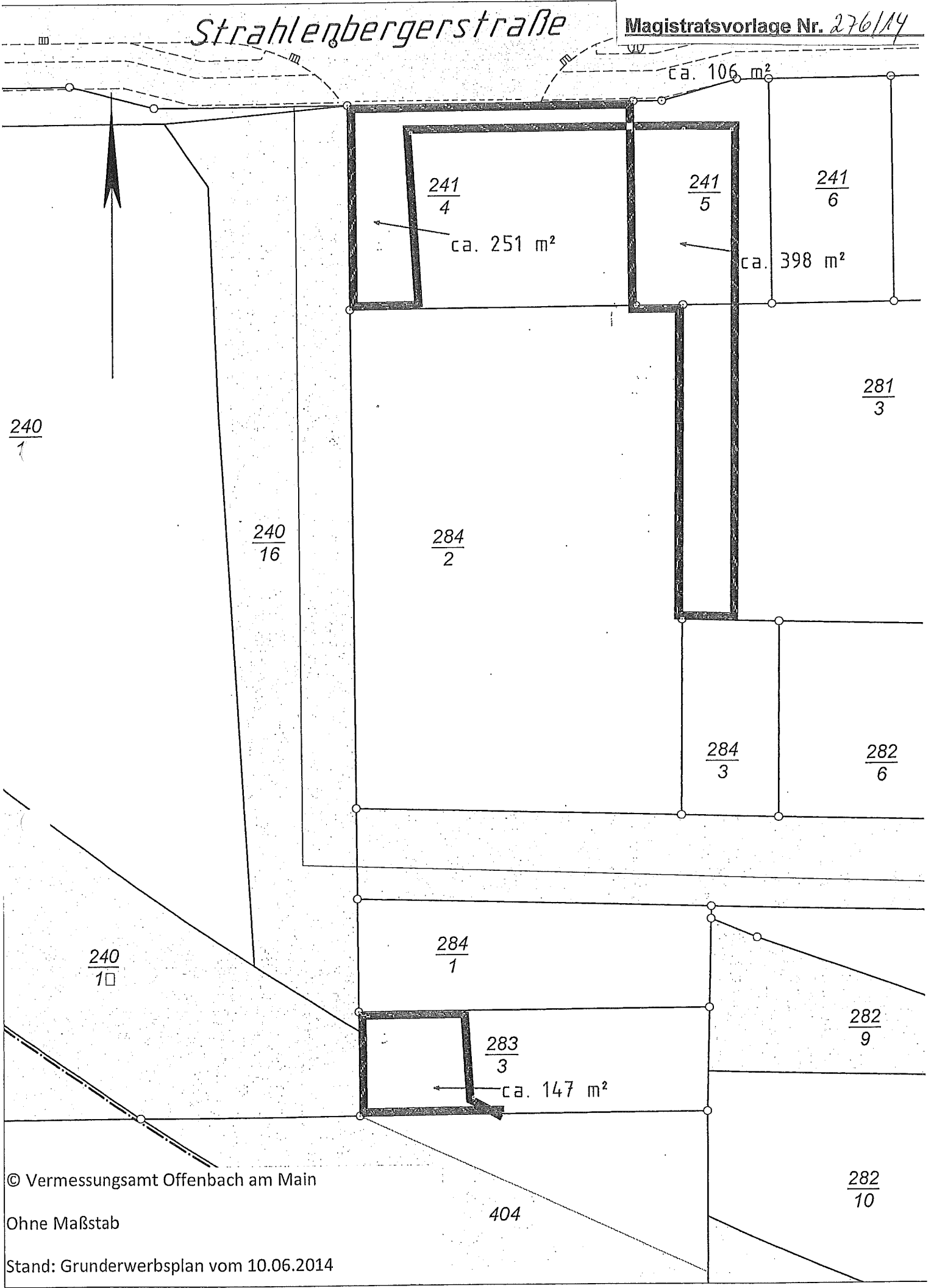


Strahlenbergerstraße



$\frac{240}{1}$

$\frac{240}{16}$

$\frac{284}{2}$

$\frac{284}{1}$

$\frac{240}{10}$

$\frac{283}{3}$

ca. 147 m²

$\frac{241}{4}$

ca. 251 m²

$\frac{241}{5}$

ca. 398 m²

$\frac{241}{6}$

ca. 106 m²

$\frac{281}{3}$

$\frac{284}{3}$

$\frac{282}{6}$

$\frac{282}{9}$

$\frac{282}{10}$

404